

# USC Price

2018-19

Sol Price School of Public Policy



USC University of  
Southern California

# USCPrice

*The mission of the USC Sol Price School of Public Policy is to improve the quality of life for people and their communities, here and abroad. We achieve this mission through education and research that promote innovative solutions to the most critical issues facing society.*

[priceschool.usc.edu](https://priceschool.usc.edu)



## Table of Contents

<b>About the Price School</b>	2	<b>International Educational Programs</b>	
<b>Message from the Dean</b>	4	Master of International Public Policy and Management (IPPAM)	42
<b>A Visionary Gift</b>	6	International Labs	43
		International Executive Education Programs	43
<b>Graduate Programs in Urban Planning</b>		<b>Executive and Leadership Programs</b>	
Master of Planning (MPL)	11	Executive Master of Leadership (EML)	46
Executive Master of Urban Planning (see page 12)		Ross Minority Program in Real Estate	48
PhD in Urban Planning and Development (see page 50)		Executive Master of Health Administration (EMHA) (see page 37)	
<b>Graduate Programs in Public Administration</b>		Master of International Public Policy and Management (IPPAM) (see page 42)	
Master of Public Administration (MPA)	15	Short-Term Executive Leadership Programs	48
Online Master of Public Administration (see page 70)		International Executive Education Programs (see page 43)	
PhD in Public Policy and Management (see page 50)		<b>Doctoral Programs</b>	
<b>Graduate Programs in Public Policy</b>		Doctor of Philosophy (PhD) in Public Policy and Management	50
Master of Public Policy (MPP)	23	Doctor of Philosophy (PhD) in Urban Planning and Development	50
Master of Public Policy Data Science (see page 23)		Doctor of Policy, Planning, and Development (DPPD)	52
PhD in Public Policy and Management (see page 50)		<b>Undergraduate Programs</b>	
<b>Graduate Programs in Nonprofit Leadership</b>		Bachelor of Science in Urban Studies and Planning	54
Master of Nonprofit Leadership and Management	26	Bachelor of Science in Public Policy	56
Graduate Certificate in Nonprofit Management and Policy	29	Bachelor of Science in Real Estate Development	58
<b>Graduate Program in Global Public Policy</b>		<b>Faculty</b>	62-67
Master of Global Public Policy	30	<b>Research Centers and Groups</b>	68-69
<b>Graduate Programs in Health Policy and Management</b>		<b>Online Learning: Online Degrees and Certificates</b>	
Master of Health Administration (MHA)	35	Online Master of Public Administration	70
Executive Master of Health Administration (EMHA)	37	Executive Master of Health Administration	70
Master of Health Systems Management Engineering (MHSME)	37	Online Certificate in Homeland Security and Public Policy	70
Master of Long-Term Care Administration (MLTCA)	37	Online Certificate in Administration of Long-Term Care Programs	70
<b>Graduate Programs in Real Estate Development</b>		<b>Price School in Sacramento</b>	71
Dollinger Master of Real Estate Development (MRED)	39	<b>USC Price Office of Career Services</b>	72
Ross Minority Program in Real Estate (see page 48)		<b>USC Price Students and Student Associations</b>	74



# About the Price School

## Ninety years of educating leaders and innovators

In 1929, the USC School of Citizenship and Public Administration was founded after a request from local public administrators to professionalize public administration and urban planning training, becoming the second school of its kind in the nation. The USC Sol Price School of Public Policy remains a leading academic institution in 21st Century research and education, with more than 200 faculty and staff. Three pillars — governance, urban development and policy — traverse 14 interdisciplinary research centers and six primary fields of study: public management, public policy, nonprofit leadership, health policy and management, urban planning and real estate development.

The Price School’s degree programs draw on the expertise of faculty and practicing professionals to create a learning environment with breadth and depth that sets the Price School apart. The Price School ranks second nationwide among “America’s Best Graduate Schools” for public affairs, according to *U.S. News & World Report* (2019).

### A PRICE SCHOOL EDUCATION

The Price School offers an education that:

- Combines social sciences, professional expertise, and the resources of a world-class research university to give students a wide scope and variety.
- Fosters relationships between students and teachers.
- Offers both academic and real-world experiences, drawing on a network of engaged alumni, advisers, and prominent professionals.
- Encourages innovation, entrepreneurship, experimentation, and collaboration.
- Instills a multidisciplinary and problem-solving ethic.
- Focuses broadly and inclusively on the issues, constituencies, structures, and institutions engaged in public life — in both governance and the built environment.
- Uses Los Angeles and the greater Southern California region as a living laboratory in which to practice the lessons of the classroom.
- Provides students opportunities to apply their skills in the global arena.

New forms of governance require that public administrators, policymakers, planners, nonprofit leaders, real estate developers, and health care managers work together — and reach across sectors — for the betterment of communities everywhere. It is for this

multidisciplinary reality that the Price School prepares its students and conducts its academic research.

### EXCEPTIONAL FACULTY

Price School faculty members are distinguished scholars who share a deep commitment to research and teaching. Their diverse disciplinary backgrounds and research interests include economics, international relations, urban planning, organizational behavior, philosophy, political science, psychology, public administration, public policy, sociology, and social ethics, among others.



Founding Dean Emery Olson (far left) stands with inaugural “Short Course” faculty members J.W. Charleville, City Manager; William B. Munro, Harvard University; John Edy, President, International City/County Management Association; Ira Hiscock, Yale University; Edwin A. Cottrell, Stanford University; Abel Wolman, Department of Health; Charles Spofford, Massachusetts Institute of Technology, ca. 1929.

Many Price School faculty also serve on the boards of leading academic journals and major public and nonprofit organizations. In their work, they contribute to the store of knowledge in their respective disciplines and to the formation of the next generation of civic, community, and business leaders.

### EXTRAORDINARY STUDENTS

Students with a wide range of backgrounds and interests are drawn to the Price School’s academic programs. Many enter the school’s master’s degree programs directly after completing their undergraduate degrees, while others have accumulated significant experience in professional practice. The Price School’s class scheduling accommodates both full-time students and working professionals. Graduates of the school hold important positions in government, business, and the nonprofit sector. In all their endeavors, alumni draw on the invaluable repertoire of knowledge and skills gained at the Price School.

### RESEARCH OPPORTUNITIES

USC is the oldest private research university in the American West and one of only 60 members of the Association of American Universities. Its faculty and students collaborate on a wide range of individual and grant-funded research projects, many of which take place in the school’s research centers and institutes. That research often directly impacts Southern California, the nation, and the world.

### THE PRICE SCHOOL CONTEXT

The Price School’s multidisciplinary nature provides a cohesive education with breadth and depth that sets its academic programs apart. To prepare themselves for a wide range of careers, students are encouraged to take courses offered by the school’s distinctive, yet

interconnected, master’s degree programs: urban planning, public administration, public policy, public policy data science, nonprofit leadership, health administration, and real estate development. A student’s peers inside the classroom today may become his or her professional colleagues locally and globally tomorrow.

### ABOUT USC

USC is one of the world’s premier teaching and research universities. Distinguished by a renowned faculty, innovative community-building initiatives, and highly selective admission standards, USC ranks in the top one percent of the nation’s colleges and universities in academic quality. Among private research universities, USC consistently appears on the list of the top 10 recipients of federal research funding.

In addition, USC boasts a strong tradition of public service with wide-ranging social impacts. As the largest private employer in Los Angeles, USC is also a powerful economic engine — generating over \$8 billion in fiscal activity annually in the Los Angeles region and beyond.

### WELCOME TO LOS ANGELES

There’s no better place to study and analyze policy, planning, and development than Los Angeles, a world-class metropolis that is home to USC and the Price School. L.A. is the second-largest U.S. city and offers unique diversity unlike anywhere in the world — from its people and landscapes to its industries and cultures. It is also a global economic hub — a center of international trade, business, finance, technology, aerospace, and entertainment.

USC, located just three miles from the city’s downtown, 12 miles from the beach, and 60 miles from both deserts and snow-capped mountains, is truly a gateway to all of the varied experiences L.A. has to offer.



*“USC Price was the only school I decided to apply to. I knew Price would provide me with the necessary skills and expertise that would become practical in my future line of work.”*

Corinna Jiang, MPA ’15  
Research Fellow, USC’s National Center for Risk and Economic Analysis of Terrorism Events (CREATE)





# A Message From the Dean



*“For nine decades, the Price School has forged solutions toward a resilient and just world, meeting each generation of challenges with purpose, principle and a pioneering spirit.”*

**Jack H. Knott**  
Dean, USC Sol Price School of Public Policy

**PIONEERS OF PUBLIC SERVICE**

As citizens’ and women’s groups propelled the Good Government Movement forward in the early 20<sup>th</sup> century, USC answered a call from local public officials to establish a school to advance professionalism among public servants.

Our school opened its doors in 1929, “with no exact precedent in American education<sup>1</sup>,” the founding dean noted in the Los Angeles Times, underscoring the pioneering spirit that continues to define the Price School today.

Its early mission, “to develop in its [students] the capacity to assume positions of leadership and trust in the community, and to discharge those responsibilities honorably and effectively,” aptly clarified the School’s purpose and core values.

In the decades since, a deep and abiding commitment to the principles of ethical service, professional integrity and critical social awareness has guided our evolution toward an ever-increasing reach into service, scholarship and influence.

**21ST CENTURY PROBLEM SOLVING**

The Price School’s distinction as a leading academic institution in 21<sup>st</sup> century research and education lies in the multiplicity of interconnected disciplines and diverse passions housed under one roof, calibrating new ideas to solve contemporary problems.

Our three pillars: governance, urban development, and policy, cut across 15 interdisciplinary research centers and six primary fields of study — public management, public policy, nonprofit leadership, health policy and management, urban planning and real estate development.

The Price School addresses, for example, housing and real estate challenges from the standpoint of private market forces, affordability, migration, discrimination and income inequality. We similarly employ a comprehensive approach to complex problems in all of our fields.

This moment in history lays bare the need to further challenge past assumptions and take a stronger stand to support vulnerable communities in service to a better, more equitable world. The Price School remains committed to impart to our students the practice of engaging directly with all members of society — or any community they serve — and to model that ethic within our own halls.

**FORGING SOLUTIONS TOWARD A RESILIENT AND JUST WORLD**

For nine decades, the Price School has forged solutions toward a resilient and just world, meeting each generation of challenges with purpose, principle and a pioneering spirit.

As we look toward the future, we carry forward our legacy to bring citizens and government together, engage diverse populations diligently and ethically, and employ multiple lenses to influence policy and governance, and advance our fields of study. Most importantly, we continue our tradition of defining excellence and innovation in public affairs education and research.

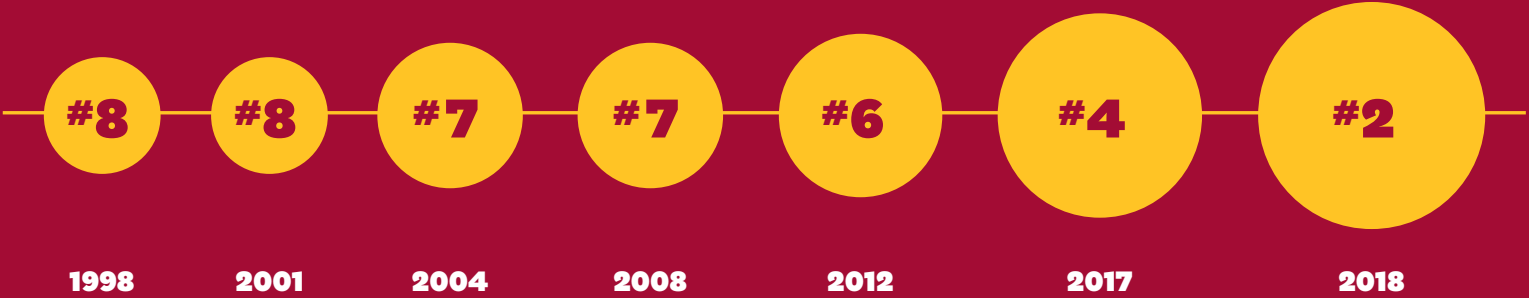
I hope you enjoy learning more about key moments in our history, as well as our work, achievements and influence today.

Sincerely,  
Jack H. Knott, Dean  
*C. Erwin and Ione L. Piper Chair and Professor*  
USC Sol Price School of Public Policy



*Dean Emery Olson (second from left, back row) engaged with several women’s groups for input as the school formed its mission and offerings, ca. 1929.*

# The Nation’s Finest



*The Sol Price School of Public Policy ranks 2<sup>nd</sup> among 282 schools of public affairs nationwide, according to U.S. News & World Report’s “Best Graduate Schools” released in 2019.*

<sup>1</sup> Olson, E. E., (1930, May 10) The University of Southern California, *Los Angeles Times*, pg. A4.



# A Visionary Gift



Sol Price

*“We are fortunate that the source of our naming gift grasps the magnificence of the interdisciplinary nature of our school, and in turn, inspires us with great pride to bear the name of Sol Price.”*

**Jack H. Knott**

Dean, USC Sol Price School of Public Policy

## THE LEGACY OF SOL PRICE

The 2011 gift to name the USC Sol Price School of Public Policy honors the life and legacy of Sol Price, a visionary entrepreneur who pioneered new practices in retail, real estate, and philanthropy. He was also a man of great integrity guided by a strong moral compass to improve the quality of life for the less fortunate.

The founder of Price Club, which later merged with Costco, Sol Price revolutionized consumer buying habits through a membership club model that provided greater value at a reduced cost to his customers. He was known especially for the care and dignity with which he treated his employees, and for viewing himself as the trustee and fiduciary of his customers.

Equally important, Sol Price worked tirelessly to provide opportunities for families in low-income urban areas by employing all the primary fields of the school: urban planning, public administration, public policy, nonprofit leadership, health administration, and real estate development. Moreover, he acted to change national public policies in Washington, D.C.

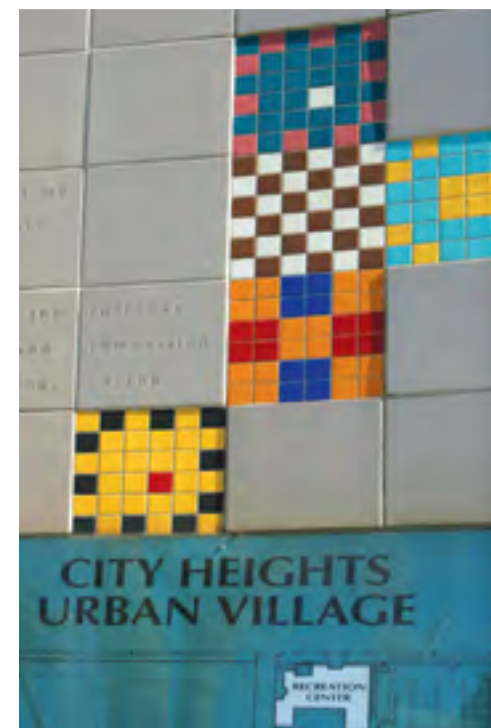
Sol's son, Robert Price, readily recognized the powerful combination that our primary fields of study, working together, bring to addressing the needs of our communities, our country, and the world. Our naming gift reflects a remarkable alignment between the legacy of Sol Price and the mission of this school.

## SOL PRICE CENTER FOR SOCIAL INNOVATION

The gift also established the Sol Price Center for Social Innovation to advance ideas, strategies, and practices that enhance the quality of life for people in urban communities.

Since the 1980s, Price Charities, established by Sol and Robert Price, has employed an interdisciplinary approach to transform the low-income urban neighborhood of City Heights in San Diego. They brought needed public services to the area by developing unique public-private partnerships. They established community and school-based health centers, developed a thriving urban village that included a new library, and created a public park on a freeway overpass. They created mixed-use real estate development projects as part of their economic development efforts in the area.

City Heights is a ready test bed to engage students and faculty across disciplines. By combining the rich sources of academic knowledge and expertise from our school with the on-the-ground efforts of Price Charities, the Sol Price Center for Social Innovation will define the best models for creating a better quality of life in the new “urban century.”





The USC Sol Price School of Public Policy originally was founded in 1929 as the School of Citizenship and Public Administration. It was the second school of its kind in the country and began with strong connections to the community — connections that continue to this day. The 1929 curriculum included classes in urban and regional planning. Over time, urban planning became a school of its own. In the late 1980s, the USC School of Public Administration formed programs in health administration and in public policy; and the USC School of Urban Planning developed one of the nation's first master's degrees in real estate development. Then, in a major milestone, these various strands came together again in 1998, forming the innovative, multidisciplinary school that the Price School is today.







# Graduate Programs in Urban Planning

## *Driving sustainable growth and change*

Urban planning professionals help communities and decision makers at the local, state, and national levels create solutions to problems related to land use, transportation, housing, economic development, the environment, sustainability, and the design of more livable communities. Planners are analysts, conveners, communicators, and entrepreneurs who address urban issues at various scales: city blocks, neighborhoods, metropolises, and even entire regions. Planners engage with businesses, citizen groups, and elected officials and work in the interest of future generations in a global economy and an urbanizing world.

Urban planners address critical challenges of contemporary social, economic, and environmental problems:

- How can we make a city greener without creating economic inefficiencies that adversely affect residents' lives?
- How can we protect vulnerable communities while managing growth and change?
- What balance does a region strike between private and public transportation?
- What design components can we insert into neighborhood plans to help residents lead healthier lives?
- How does the American experience compare to the challenges and opportunities in growing Asian, Latin American, and European cities?

### **THE MASTER OF PLANNING PROGRAM (MPL)**

The Master of Planning (MPL) program at the USC Sol Price School of Public Policy is one of the most distinguished of its kind in the United States. The Price School is rated second among public affairs schools nationwide and is number one in the Urban Policy specialty, according to *U.S. News & World Report* (2019). In addition, the MPL program has been ranked in the top 10 in every Planetizen Guide to urban planning.

The MPL program is committed to preparing students for practice at the local, regional, state, and national levels. A hallmark of the program is a multi-sector approach to planning, which emphasizes the needs of public and private interests, nonprofit organizations, and citizen groups.

A further distinction of the curriculum is its commitment to exploring universal principles of planning and preparing students to practice anywhere in the world.

Describing the relevance of urban planning, Professor Marlon Boarnet, director of graduate programs in urban planning, says, "Half of humanity now lives in urban areas. As challenges of sustainability, economic development, human health, and democratic governance play out in cities and mega-cities across the globe, urban planners will have an increasingly critical role to play."

MPL students come from all over the country and abroad. They are culturally diverse and vary in their backgrounds, experience, interests, professional training, and education. All share a commitment to implementing positive community change and improving the quality of life for people in the built environment.

A prestigious advisory board provides direction to the program and practical training to students. Members serve as guest speakers in classes and seminars, contribute financial support, and assist in student placement.

The MPL program is a two-year full-time program or a three-year part-time program.

### **MPL SPECIALIZATIONS AND CONCENTRATIONS**

Concentrations are required and reflect the strengths of the school. A methodology and a gateway course are associated with each area. MPL students may select from the following:

- International Specialization
- Economic Development
- Preservation and Design of the Built Environment
- Social and Community Planning
- Sustainable Land Use Planning
- Transportation and Infrastructure Planning





*“My course projects focused on proposing practical changes to communities that enhance quality of life. Site-specific design projects also challenged us to organize a site within its community context (e.g. circulation, density), analyze land use regulations, and propose mitigation and implementation strategies. As a planner in the public sector, I appreciated the opportunity to work while taking courses for both my MPA and MPL degrees, because I was able to frame and analyze how current theories in academia and trends in planning learned in Price School courses applied or did not apply in the field. I now work for the City of Inglewood in the Planning Division, where I interned during my tenure at USC Price.”*

**Taylor Kay , MPL '18**

Assistant Planner, Planning Division, City of Inglewood



*“The interdisciplinary nature of the MPL program provides a holistic view of cities that has allowed me to transition seamlessly between jobs and internships in transportation, demography, environmental justice, and land use planning.”*  
**Derek Hung, MPL '17**  
Assistant Planner, Terry A. Hayes Associates, Inc.

**EXECUTIVE MASTER OF URBAN PLANNING**  
This new degree program trains leaders to understand both the public and private sector and bridges the gap between urban planning goals and the objectives and constraints of effective real estate development while giving students the flexible schedule of an online program. The program can be completed in 16 months while working full time.  
For more information: [priceschool.usc.edu/programs/masters/executive-mup](https://priceschool.usc.edu/programs/masters/executive-mup).

**GRADUATE CERTIFICATE PROGRAMS**  
USC offers several graduate certificate programs, which may be completed in conjunction with a graduate program. Students in the MPL program may be interested in earning one or more of the following graduate certificates:

- Certificate in Real Estate Development
- Certificate in Sustainable Policy and Planning
- Certificate in Social Justice
- Certificate in Transportation Systems\*
- Certificate in Geographic Information Science and Technology
- Certificate in Heritage Conservation
- Certificate in Public Management\*
- Certificate in Public Policy\*

\*See [priceschool.usc.edu/gainful-employment-disclosure](https://priceschool.usc.edu/gainful-employment-disclosure).

For more information on the Price School’s graduate certificate offerings, please visit [priceschool.usc.edu/mpl](https://priceschool.usc.edu/mpl).

**DUAL DEGREES**  
It is possible to earn the MPL degree simultaneously with 12 other graduate degrees offered at Price and other schools at USC.  
For more information, please visit [priceschool.usc.edu/programs/masters/mpl/curriculum/dual-degrees](https://priceschool.usc.edu/programs/masters/mpl/curriculum/dual-degrees).

**DEAN’S MERIT SCHOLARSHIP**  
Merit-based scholarships are awarded at the time of admission to some entering USC Price students. In most cases, awards are renewable for a second year assuming satisfactory academic progress.

**ADMISSION AND SCHOLARSHIP DEADLINES**

<b>Fall</b>	December 15 scholarship deadline
<b>Fall</b>	July 1 final admission deadline
<b>Fall</b>	May 1 international admission deadline
<b>Spring</b>	November 1 final admission deadline

**DOCTOR OF PHILOSOPHY, URBAN PLANNING AND DEVELOPMENT (PHD)**  
The USC Sol Price School of Public Policy offers a PhD in Urban Planning and Development. See page 50 for more information.



MPL PROGRAM CHARACTERISTICS 2017-18 Academic Year	
Total Enrollment	120
Enrolled Full Time	98%
Underrepresented	44%
International	19%
Outside Southern California	47%
Average Age	26
Average Class Size (core)	58
New Students (fall)	65
GPA (1 <sup>st</sup> and 3 <sup>rd</sup> quartile range)	3.26-3.69
GRE (1 <sup>st</sup> and 3 <sup>rd</sup> quartile range)	V 151-161 Q 152-163



Professor Marlon Boarnet





# Graduate Programs in Public Administration

## Shaping the future of public service

Public administrators run our harbors, airports, and public transportation networks. They manage our environmental protection systems, community centers, schools, and universities. They are leaders in health care, urban revitalization, and welfare reform. They work in the public and nonprofit sectors and with private agencies to help manage virtually every aspect of our public services. They oversee and continuously redesign governance structures at the city, county, state, and federal levels to create place-based solutions to community problems. A career in public management provides an opportunity to shape the future of our communities and to improve our overall quality of life.

In a world of rapid change, public administration professionals use their leadership capabilities to address critical social challenges, including:

- How can we maintain high-quality public service in the face of diminishing government resources?
- How can leaders from multiple sectors work together to solve public problems?
- How can citizens more effectively engage with governing processes?
- What must be done to prepare the next generation of leaders in public service, as our current leaders near retirement?

### THE MASTER OF PUBLIC ADMINISTRATION PROGRAM

The Master of Public Administration (MPA) program offers a professional education designed to prepare students for the challenges and opportunities of a career in public management or in related nonprofit and private organizations. The MPA program at the USC Sol Price School of Public Policy is one of the oldest and most distinguished programs of its kind in the United States. The Price School is rated second overall among 282 public affairs schools and ranks fourth for both the public management/leadership and local government management specialties, according to *U.S. News & World Report* (2019).

Its mission is to educate professionals to assume public service leadership positions and to improve the state of the art in the governance and management of public and nonprofit organizations.

Describing MPA students, Professor Shui-Yan Tang, chair, Department of Governance, Management and Policy Process, says, “A common feature uniting our diverse MPA student body is that they all want to make

a difference in the world — they desire to add value to their community and society in one way or another. Our task in this program is to better enable them to pursue their passion.” Some of the program’s specific strengths include:

- A management, analytical, and policymaking focus that prepares students to pursue their individual interests and concentrate in one of many specialized fields
- A world-class full-time faculty of exceptional diversity and strength
- An active part-time faculty of distinguished professionals
- A nearly 90-year history of leadership in public administration education
- Paid internship opportunities
- A learning laboratory in the urban context of Los Angeles and Southern California
- A cross-sectoral approach: public, private, and nonprofit
- The City/County Management Fellowship, which offers selected students financial, academic, and professional support from prestigious faculty and practitioners in local government
- An extensive alumni network
- An advisory board comprising leaders in the public, private, and nonprofit sectors
- MPA Labs — enriching workshops that develop professional skills and knowledge about a broad range of social issues
- A satellite center in Sacramento — the Price School in Sacramento at the USC State Capital Center — allows students to gain first-hand knowledge of complex state-local and state-federal relationships
- The option to complete the entire MPA degree online



*“When I landed an internship as an intern coordinator with Sen. Kamala Harris’ campaign, I was taking a class at Price in human behavior, which showed me how to be a leader. The internship led to full-time employment with Sen. Harris’ office.”*

**Vanessa Alderete, MPA ’17**  
Immigration and Environmental  
Constituent Service Representative,  
office of Sen. Kamala Harris,  
D- California



*“The MPA program provided me with a solid conceptual and practical foundation to make a difference. From learning about human behavior in public organizations to the multifaceted relationships among sectors, I am well informed to make decisions as a public and nonprofit leader.”*

**Angela Mata, MPA '14**

Project Manager and Data Analyst, Mortimer and Mimi Levitt Foundation



*“I chose to attend USC Price because its multi-disciplinary curriculum has a strong focus on the management side of public administration, with opportunities to specialize one’s courses in a specific topic area and think critically about issues facing the public sector.”*  
Brittany Mello, MPA '15  
Senior Management Analyst, City of Monrovia, CA

The MPA program is a two-year full-time program or a three-year part-time program, and may be completed at the University Park Campus in Los Angeles or the Price School in Sacramento.

**GRADUATE CERTIFICATE PROGRAMS**

The Price School offers several graduate certificate programs in its major fields of study, which may be completed in conjunction with a graduate program. Students in the MPA program may be interested in earning one or more of the following graduate certificates:

- Certificate in Administration of Long-Term Care Programs\*
- Certificate in City/County Management
- Certificate in Nonprofit Management and Policy
- Certificate in Political Management
- Certificate in Homeland Security and Public Policy
- Certificate in Public Policy\*
- Certificate in Real Estate Development
- Certificate in Sustainable Policy and Planning

\*See [priceschool.usc.edu/gainful-employment-disclosure](https://priceschool.usc.edu/gainful-employment-disclosure).

For more information or to view the complete list of all graduate certificate offerings, please visit [priceschool.usc.edu/certificate](https://priceschool.usc.edu/certificate).

**DUAL DEGREES**

It is possible to earn the MPA degree simultaneously with six other graduate degrees offered at Price, other schools at USC, and other institutions.

For more information, please visit [priceschool.usc.edu/mpa/dual-degrees](https://priceschool.usc.edu/mpa/dual-degrees).

**DEAN’S MERIT SCHOLARSHIP**

Merit-based scholarships are awarded at the time of admission to some entering USC Price students. In most cases, awards are renewable for a second year assuming satisfactory academic progress.

**ADMISSION AND SCHOLARSHIP DEADLINES**

<b>Fall</b>	December 15 scholarship deadline
<b>Fall</b>	July 1 final admission deadline

**ONLINE MASTER OF PUBLIC ADMINISTRATION**

The Price School offers its distinguished Master of Public Administration (MPA) program in the online learning arena. See page 70 for more information.

**DOCTOR OF PHILOSOPHY, PUBLIC POLICY AND MANAGEMENT (PHD)**

The Price School offers a PhD in Public Policy and Management. See page 50 for more information.

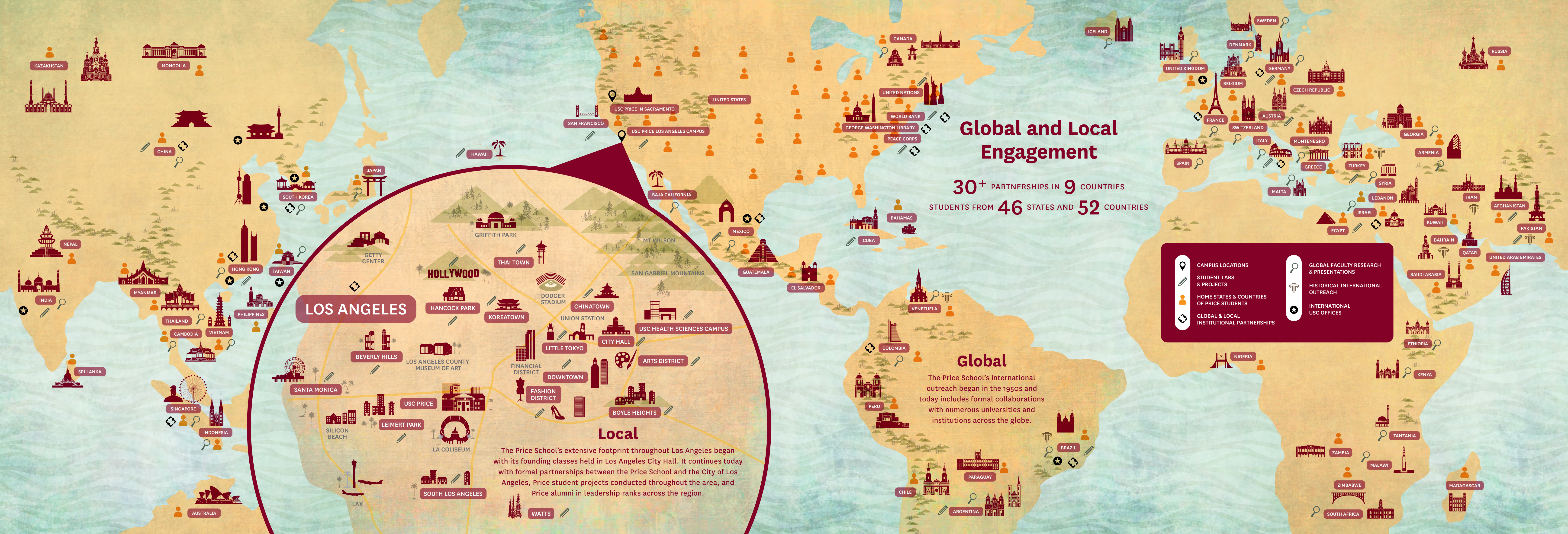


**PROGRAM CHARACTERISTICS**  
2017-18 Academic Year

Total Enrollment	245
Enrolled Full Time	82%
Underrepresented	40%
International	33%
Outside Southern California	54%
Average Age	28
Average Class Size (core)	41
New Students (fall)	117
GPA (1 <sup>st</sup> and 3 <sup>rd</sup> quartile range)*	3.15-3.68
GRE (1 <sup>st</sup> and 3 <sup>rd</sup> quartile range)*	V 150-158 Q 153-167

\*Does not cover fall online









# Graduate Programs in Public Policy

## *The tools that lead to policy solutions*

Complex challenges — at municipal, state, national and global levels — demand the talents of skilled public policy practitioners. Working within a complex system of governance, policy practitioners work in partnership with peers and colleagues in government, business, and the nonprofit sector to identify crucial policy questions and develop tools to discover the answers. They integrate leadership, analysis, evaluation, and management to address the most pressing policy issues facing society. Their work covers a wide range of fields, including social and urban services, environmental sustainability, economic development, international affairs and trade, health, education, transportation, and homeland security.

Policy analysis informs and shape the public mandates and strategies that improve life for residents in diverse communities, confronting complicated issues including:

- What strategies can increase development of affordable housing in Los Angeles County?
- What technological investments and behavioral changes are needed to redress climate change?
- What models and best practices can effectively facilitate social entrepreneurship?
- What sustainability strategies can help drought-stricken California?
- How can local governments meaningfully engage community members in policymaking and planning?
- How can successful sustainable development programs be promoted to communities across the world?

**THE MASTER OF PUBLIC POLICY PROGRAM (MPP)**  
The Master of Public Policy (MPP) program at the USC Sol Price School of Public Policy is one of the most distinguished of its kind in the United States, teaching students to put knowledge in action. The Price School is rated fourth overall among public affairs schools nationwide, according to *U.S. News & World Report* (2019). A strong analytic core — economic analysis, quantitative analysis, and political analysis — with a professional focus ensures that students have the skills to be successful in our rapidly globalizing world. Through coursework, interaction with faculty, and a renowned Policy Analysis Practicum experience with real-world clients, MPP students improve their awareness of the political environment and gain an understanding of the effects of decisions on government, business, and the community. They can also participate in the annual Local

Government Case Challenge, Nonprofit Case Challenge, and Bay Area Policy Forum, as well as contribute to the student-edited journal *Policy and Practice*.

MPP students are an exceptional group with diverse backgrounds, experience, interests, professional training, and education. Some come straight from an undergraduate setting, while others have significant experience in professional practice. While most public policy students hold bachelor's degrees in the social sciences, students with an undergraduate degree in any field are eligible for admission and encouraged to apply. The typical MPP candidate possesses strong analytical, quantitative, and verbal skills; intellectual curiosity; and a deep commitment to questioning and solving the problems facing our society.

"Our program is designed to give students experience solving problems for real clients, on a wide range of issues," says Professor Richard Green, Director of Policy Analysis and Real Estate. "Through empirical analysis, MPP graduates emerge with expertise in challenges facing our communities today, from housing and the environment to health care and social equity."

The MPP degree program is a two-year full-time program.

**MASTER OF PUBLIC POLICY DATA SCIENCE**  
Informatics and big data are increasingly essential to policy development in public and private sectors. Knowledge of both can lead to ever-expanding career opportunities. The Price School of Public Policy and USC Viterbi School of Engineering now offer a **Master of Science in Public Policy Data Science** to bolster students' decision-making role in government agencies



*"The MPP program provided me with not only the specific tools to perform critical analysis of information, but a framework for approaching my work that has been invaluable."*  
Rachel Huguet, MPP '17  
Program Associate, International Programs, The Conrad N. Hilton Foundation





Professor Antonio Bento

MPP PROGRAM CHARACTERISTICS 2017-18 Academic Year	
Total Enrollment	113
Enrolled Full Time	98%
Underrepresented	42%
International	28%
Outside Southern California	55%
Average Age	26
Median Class Size (core)	33
New Students (fall)	55
GPA (median)	3.48
GRE (median)	V 156
	Q 160



*“Price’s commitment to diversity sets it apart. I also have been consistently impressed by its unapologetic commitment to social justice, and its efforts to ensure that a social justice focus permeates the school’s curriculum.”*

**La Mikia Castillo, MPP/MPL ’12**

National Organizing Director, National Foster Youth Institute

and the corporate realm. Students can complete the degree in three to four semesters and a degree in computer science is not required. Students must be admitted by both the Price School and Viterbi School; one application is required. For information, contact Marisol Rios in Price School Admissions, [marisolr@price.usc.edu](mailto:marisolr@price.usc.edu).

#### MPP SPECIALIZATIONS

MPP students are encouraged to specialize within a substantive subject area. Students are free to design specializations, but popular areas include:

- Education Policy
- Environmental Policy
- Health Policy
- Homeland Security and Public Policy
- Public Policy Analysis
- Social Policy and Social Justice
- Urban Policy

#### GRADUATE CERTIFICATE PROGRAMS

The Price School offers several graduate certificate programs in its major fields of study, and may be completed in conjunction with a graduate program. Students in the MPP program may be interested in earning one or more of the following graduate certificates:

- Certificate in Homeland Security and Public Policy
- Certificate in Nonprofit Management and Policy
- Certificate in Public Management
- Certificate in Social Innovation
- Certificate in Sustainable Policy and Planning

For more information or to view the complete list of all graduate certificate offerings, please visit [priceschool.usc.edu/certificate](http://priceschool.usc.edu/certificate).

#### DUAL DEGREES

It is possible to earn the MPP degree simultaneously with two other graduate degrees offered at Price and other schools at USC.

For more information, please visit [priceschool.usc.edu/mpp/dual-degree](http://priceschool.usc.edu/mpp/dual-degree).

#### DEAN’S MERIT SCHOLARSHIP

Merit-based scholarships are awarded at the time of admission to some entering USC Price students. In most cases, awards are renewable for a second year assuming satisfactory academic progress.

#### ADMISSION AND SCHOLARSHIP DEADLINES

<b>Fall</b>	December 15 scholarship deadline
<b>Fall</b>	July 1 final admission deadline

#### DOCTOR OF PHILOSOPHY, PUBLIC POLICY AND MANAGEMENT (PHD)

The Price School offers a PhD in Public Policy and Management. See page 50 for more information.



*“In addition to gaining an outstanding education at Price, I felt very privileged to learn alongside a diverse, passionate group of people with whom I knew I would soon be improving the communities around us.”*

**Nick Weinmeister, MPP ’17**  
Policy Analyst, Los Angeles  
Homeless Services Authority



# Graduate Programs in Nonprofit Leadership and Management

## *At the nexus of innovation and social change*

The nonprofit sector is where change becomes a reality, dealing with some of society's most complex public problems and working to develop solutions. The issues span from school reform to health care access, economic development to cleaner environments, affordable housing to greater mobility, and civic engagement to effective governance. Within the sector, nonprofit organizations provide essential public services, advocate for public policy and social change, and help form and sustain the networks that strengthen the bonds of communities.

Evolving funding sources and governance structures enable nonprofits to fulfill this unique role, distinct from government and business. The size and scope of challenges faced by communities have pushed nonprofits to build the capacity to find innovative solutions by encouraging experimentation with scalable models. Consequently, the nonprofit sector is an important source of social innovation — whether by itself or in concert with government or business — not only in the U.S., but worldwide.

Nonprofits, philanthropy, and social innovation are three areas of study crucial to addressing today's most pressing issues. The lessons that can be learned from others in the program, and even the possibilities of added value through collaboration, will be a big part of changing society for the better.

For students and working professionals looking to acquire a complete, multidisciplinary understanding of the nonprofit and philanthropic sector as well as how best to use that knowledge to effect social change, the USC Sol Price School of Public Policy offers an unparalleled educational environment.

For over three decades, USC Price has been a leader in research and education in the nonprofit and philanthropic sector. The Price School is ranked sixth by *U.S. News & World Report* (2019) in Nonprofit Management. USC Price offers a number of educational programs and research opportunities for both students and working professionals. The design of institutions for public problem solving and the development of innovative strategies and solutions for those problems are central

to USC Price's intellectual work, education programs, research, and engagement with the community. Here, students acquire a solid foundation in theory, and learn how they can solve critical problems.

### **THE MASTER OF NONPROFIT LEADERSHIP AND MANAGEMENT (MNLN) PROGRAM**

Nonprofits, philanthropy, and social innovation play an increasingly integrated role in governance and public problem solving. In recognition of this importance, the Price School offers a Master of Nonprofit Leadership and Management degree. From service delivery to advocacy and from community building to social change, the challenges of leadership in the nonprofit sector are fundamentally different from the prevailing concerns of public and business administration. This degree prepares Price students to distinguish themselves as leaders, providing critical leadership skills and training to help them effectively advance the missions of service delivery nonprofits, advocacy organizations, social enterprises, and philanthropic institutions throughout the U.S. and the world.

The MNLN program is designed for those with several years of work experience as well as those intending to embark upon careers in this field. It builds on the Price School's considerable research strengths and top-ranked academic foundation in philanthropy and nonprofits as well as Price's longstanding commitment to positioning nonprofit activities within a broad cross-sector context. It complements the curricular offerings of other Price degree programs, while providing a



*“To support the continued advancement and professionalization of the nonprofit sector, we must ensure that the next generation of nonprofit leaders has the technical, managerial, analytical, and leadership skills required to navigate the unique challenges of nonprofit organizations. The Price School’s Master of Nonprofit Leadership and Management degree does just that, benefitting not only the nonprofit sector but, more importantly, the communities and people that it serves.”*

— Fred Ali  
President and CEO,  
Weingart Foundation



*“As a Price alumna who has spent decades working in the nonprofit sector, I am thrilled that the Price School developed the Master of Nonprofit Leadership and Management program. It will be of tremendous benefit to anyone working in the nonprofit sector, leading philanthropic organizations, or serving as a nonprofit board member or volunteer.”*

— Irene Hirano Inouye, BS '70, MPA







Nicole Esparza, Associate Professor, exchanges ideas with MNLM students.



comprehensive experience in an educational environment found only at USC Price.

The program’s unique principal features:

Curriculum

The Master of Nonprofit Leadership and Management degree is intended as a two year full-time program, three year part-time program, or a one-year accelerated program. The curriculum includes leadership and management, analytical, and contextual courses focusing on the nonprofit sector, complemented by specialty courses in board governance, fund development, financial management, and strategic planning for nonprofit organizations, to name just a few.

Capstone

One of the unique features of the program is engagement with high-performing philanthropic and nonprofit organizations through a client-based capstone course. During their final semester, students work in teams on a semester-long project for a nonprofit or philanthropic organization. This project might entail recommendations for better managing the client’s organization, new methods for advocating for social change, or strategies for funding and community engagement. At the conclusion of the course, students will produce a formal report and present their recommendations to the client.

ADMISSION AND SCHOLARSHIP DEADLINES

Fall	July 1 admission deadline
	Dec. 15 scholarship deadline
	May 1 international admission deadline

GRADUATE CERTIFICATE IN NONPROFIT MANAGEMENT AND POLICY

Students enrolled in other Price master’s degree programs can obtain a foundation in nonprofit management and policy through the graduate Certificate in Nonprofit Management and Policy. It develops nonprofit management skill and provides students with knowledge needed to understand the increasing importance of nonprofits in society and their role in forming and influencing public policy.

NONPROFIT SPECIALIZATION ELECTIVES

- Master of Public Administration students can pursue a specialization in Nonprofit Management and Policy.
- Master of Public Policy students can pursue a specialization in Nonprofit Management and Policy.

Both specializations consider how philanthropy and the nonprofit sector can contribute to innovative public problem solving.

For more information on the graduate certificate, the MPA and MPP specialization electives, as well as information related to all nonprofit and philanthropy initiatives at the Price School, please visit [priceschool.usc.edu/nonprofits-philanthropy](https://priceschool.usc.edu/nonprofits-philanthropy).

Dean’s Merit Scholarship

Merit-based scholarships are awarded at the time of admission to some entering USC Price students. In most cases, awards are renewable for a second year assuming satisfactory academic progress.



*“The challenges of leadership in the nonprofit sector are fundamentally different from the public and private sectors due to its mission focus, the complexity of multiple funding sources, the unique legal and regulatory environment, and the array of interactions with government and business. The Master of Nonprofit Leadership and Management program provides greater depth for many students pursuing careers in philanthropy, nonprofit management, and social innovation.”*

James M. Ferris  
Professor, Emery Evans Olson Chair in Nonprofit Entrepreneurship and Public Policy; Director, Center on Philanthropy and Public Policy



# Graduate Program in Global Public Policy

## A joint degree with a focus on global challenges

The joint Master of Global Public Policy degree, involving USC and The University of Hong Kong Faculty of Social Sciences, is the first of its kind linking government, business and nonprofit/NGO professionals across Asian-Pacific Rim countries to seek solutions to complex policy problems. The program addresses public policy issues arising from various global trends, focusing particularly on: climate change and environmental sustainability, social justice, global development, global growth and fiscal stability, and urbanization.

Public policymaking in the 21<sup>st</sup> century is affected by various global trends. Countries worldwide are actively learning from other jurisdictions and seeking innovative solutions to policy problems.

Increasingly, solving complex policy challenges also requires the collaboration of government, business, and civil society.

The economic rise of Asia has transformed the Asian-Pacific Rim into one of the most dynamic regions in the world, adding transnational and global dimensions to policy issues.

In recognition of the commingling of people, sectors, cultures, and jurisdictions internationally, the USC Sol Price School of Public Policy and The University of Hong Kong Faculty of Social Sciences have come together to offer a joint master degree program in Global Public Policy.

### THE MASTER OF GLOBAL PUBLIC POLICY DEGREE

The Master of Global Public Policy Degree is for:

- People who care about finding solutions to society's global problems.
- Public sector professionals who aspire to play a more significant role in policy leadership through acquiring broad knowledge and skills in public policymaking.
- Professionals whose employers conduct business in Asian-Pacific Rim countries and would benefit from an ability to assess political risks that governments and firms face in a rapidly changing environment.

- NGO managers and social entrepreneurs who would like to gain better understanding of the solutions and options that are available for solving pressing policy problems.
- Individuals whose next career step would require:
  - An understanding of economic and financial analysis and how markets affect public policy development in Asia.
  - The ability to bring government, businesses, state enterprises and NGOs together to address societal challenges and to facilitate dialogue across these sectors.
  - An understanding of the similarities and differences in cultures of organizations and individuals that comprise the policy-making process in Asia.
  - A strong network of policy experts who offer diverse perspectives and represent many countries and organizations from around the world.

Students will gain:

- Skills in analyzing global trends
- Economic and data analysis skills
- Knowledge of how different countries are tackling common policy problems
- Insights into innovative policy solutions through transboundary and/or intersectoral collaboration
- Intercultural communication and collaborative leadership skills
- Capacity to directly impact policy
- Connection to a network of policy experts from around the world

Who will benefit?

- Government managers and analysts throughout greater Asia; government managers and analysts of non-Asian countries that interact with Asian government officials.
- Analysts, mid-level managers and public affairs officers in large private organizations that conduct business in greater Asia and North America.
- Mid-level researchers in institutes that are located in or focus on policy problems in greater China
- Executive directors and program managers in NGO's and grassroots organizations
- Policy advocates
- Consultants and entrepreneurs

### THE UNIVERSITY OF HONG KONG FACULTY OF SOCIAL SCIENCES

The HKU Faculty of Social Sciences, now in its 51<sup>st</sup> year, seeks to contribute to the advancement of society and the development of leaders through excellence and innovation in teaching and learning, research and knowledge exchange. The Faculty ranks 2<sup>nd</sup> in Asia among university faculties of social science.

The University of Hong Kong Faculty of Social Sciences has put improving the human condition through sustainable development at the core of its mission.

### FACULTY

Faculty for the Master of Global Public Policy joint degree are drawn from The University of Hong Kong

Faculty of Social Sciences and the University of Southern California Sol Price School of Public Policy. They include full-time faculty and practitioners with a diversity of geographic, professional and scholarly backgrounds, and an impressive depth of global knowledge.

### EXECUTIVE FORMAT

Designed to enable students to pursue a graduate degree while continuing to advance in their careers, this 15 month program spans four academic semesters and consists of four or five in-person sessions at least once each semester. The first and last sessions will be conducted in Los Angeles and the other sessions in Hong Kong, Shanghai, or Beijing.

The remaining coursework (approximately 45%) is completed in an online format. This format allows students to gain experience doing policy analysis in two different international settings as well as balance academic work with professional and family lives.

### ADMISSION DEADLINE

**Summer** March 1 final deadline

For more information, please visit [globalpublicpolicy.usc.edu](http://globalpublicpolicy.usc.edu).







USC graduates designed Los Angeles' City Hall, the Department of Water and Power Building, St. Basil's Catholic Church, Cedars-Sinai Medical Center, and other notable structures, civic areas, and places of commerce and recreation in the Southern California urban landscape.





# Graduate Programs in Health Policy and Management

## *Addressing critical health care needs*

The United States health care system continues to undergo profound change. Access, quality, and cost are critical issues that affect all citizens, residents, and communities. Health care and the health care industry — which account for more than 18 percent of the U.S. economy — involve complex and fast-moving developments in technology, economics, ethics, finance, policy, and management. As an issue and as a sector, health care requires an understanding of public, private, and nonprofit interactions. Visionary effective leadership is needed to improve management structures in a highly competitive, market-driven environment and to build transparent, accountable, evidence-based care.

As the health care delivery system changes, career opportunities abound. No field has greater need for leaders and managers — in hospitals, health plans, medical practices, health-related enterprises, and community health organization — who possess the knowledge, skills, and experience to shape the future of health care.

Tomorrow's health care leaders must address such pressing issues as:

- How can we control health care costs as baby boomers become senior citizens and medical technology continues to advance?
- How can we measure quality of care?
- How can we assure that all U.S. residents have access to health care?

### **THE MASTER OF HEALTH ADMINISTRATION PROGRAM**

The Master of Health Administration (MHA) program draws on the university's nearly 40 years of leadership in post-graduate education in the health management and policy field. Its distinguishing feature is the application of quantitative methods within organizations to arrive at sound answers to multiple questions.

The curriculum emphasizes five contemporary key areas: Management Operations Leadership; Health Policy Analysis; Quality of Care; Health Finance; and Health Information Technology. The program is designed to allow for in-depth specializations in two of these five areas, with an emphasis on quantitative analytic methods throughout.

The Price School is rated second overall among public affairs schools nationwide, according to *U.S. News & World Report* (2019), and third in the health policy and management subcategory.

The MHA has established strong ties to the health care community — successfully bridging the worlds of academics and professional practice. Its Health Advisory Board comprises top executives in health care, government, and business as well as senior-level leaders of health care organizations. Consequently, MHA students have direct access to those who are shaping health care policy throughout the world.

"The U.S. and California health care systems evolve constantly to better meet the needs of society, even when faced with significant budget constraints," says Associate Professor Jason Doctor, Chair, Department of Health Policy and Management. "Our program prepares health care administrators to lead their organizations by adopting innovation solutions based on evidence."

The MHA program is designed as a two-year full-time program but can be completed as a part-time program.

### **MHA ELECTIVES**

MHA students may select from one of the following electives:

- Management, Operations, and Leadership
- Health Policy Analysis
- Health Finance
- Health Information Technology
- Quality of Care



*"At Price, projects certainly have the underpinnings of academics and theory, but you're also learning to be flexible within a team... those skills are incredibly important in life and business."*

Chris Van Gorder, MPA '86  
President and CEO, Scripps Health





Keck Medicine of USC

MHA Program Characteristics  
2017-18 Academic Year

Total Enrollment	140
Enrolled Full Time	92%
Domestic Asian	40%
Underrepresented	22%
International	4%
Outside Southern California	29%
Average Age	25
Average Class Size (core)	34
New Students (fall)	67
GPA (2 <sup>nd</sup> and 3 <sup>rd</sup> quartile range)	3.09-3.54
GRE (2 <sup>nd</sup> and 3 <sup>rd</sup> quartile range)	V 146-156 Q 147-157

EMHA Program Characteristics  
2017-18 Academic Year

Total Enrollment	222
Enrolled Full Time	85%
International	2%
Outside Southern California	49%
Underrepresented	48%
# Entering Students	51



Professor Mike Nichol

GRADUATE CERTIFICATE PROGRAMS

The Price School offers several graduate certificate programs in its major fields of study, and may be completed in conjunction with a graduate program. MHA students may be interested in these graduate certificates:

- Certificate in Administration of Long-Term Care Programs
- Certificate in Management of Ambulatory Care Systems
- Certificate in Nonprofit Management and Policy
- Certificate in Public Policy

For more information or to view the complete list of all graduate certificate offerings, please visit [priceschool.usc.edu/programs/certificate](https://priceschool.usc.edu/programs/certificate).

DEAN'S MERIT SCHOLARSHIP

Merit-based scholarships are awarded at the time of admission to some entering USC Price students. In most cases, awards are renewable for a second year assuming satisfactory academic progress.

ADMISSION AND SCHOLARSHIP DEADLINES

- |      |                                  |
|------|----------------------------------|
| Fall | December 15 scholarship deadline |
| Fall | July 1 final admission deadline  |

EXECUTIVE MASTER OF HEALTH ADMINISTRATION

The Executive Master of Health Administration (EMHA) is a hybrid online degree program with two five-day intensive classes held at the USC campus in Los Angeles, designed to be taken from anywhere in the world. The program provides an unparalleled opportunity for mid- to senior-level clinical and management professionals to advance or transition their careers in the dynamic field of health care. It accommodates the schedules of fully employed professionals, enabling them to earn their degrees while progressing in their careers simultaneously.

The Executive MHA course of study features an integrated thematic approach focusing on five themes related to accountability in health services organizations. The program specifically and uniquely focuses on the academic and leadership imperatives necessary to enable highly talented professionals to excel in our rapidly changing health care delivery environment.

The five themes include:

- 1 Thriving in transformational times through innovative leadership.
- 2 Delivering cost-effective care in an era of value-based purchasing.
- 3 Providing efficient management and administration.
- 4 Developing and implementing strategies to enhance patient safety and quality of care.

- 5 Demonstrating organizational and clinical effectiveness through health information technology.

The program can be completed in two years.

For more information, please visit [exehealthadmin.usc.edu](https://exehealthadmin.usc.edu).

ADMISSION AND SCHOLARSHIP DEADLINES

- |      |  |
|------|--|
| Fall | July 1 admission deadline              |
|      | Dec. 15 scholarship deadline           |
|      | May 1 international admission deadline |

HEALTH SYSTEMS OPERATIONS GRADUATE CERTIFICATE

Sponsored jointly by the Price School Master of Health Administration program and the USC Viterbi School of Engineering, this 17-unit graduate certificate was created for students with bachelor's degrees in applied social science, engineering or the sciences who are interested in building skills in operations management and health care applications. The courses taken for the certificate may be applied later to the Price School's MHA degree or the USC Viterbi School's Master of Science in Engineering Management degree, subject to approval.

For more information, please visit [viterbigradadmission.usc.edu/programs/masters/msprograms/industrial-systems-engineering/grad-cert-health-systems-ops](https://viterbigradadmission.usc.edu/programs/masters/msprograms/industrial-systems-engineering/grad-cert-health-systems-ops).

ONLINE MASTER OF LONG-TERM CARE ADMINISTRATION

In response to the emerging demands for long-term care services for people of all ages who need assistance with the activities of daily living, USC offers a Web-based master's degree program in Long-Term Care Administration.

The 28-unit program is a joint effort between the USC Davis School of Gerontology, the USC Marshall School of Business, and USC Price. Using an interdisciplinary approach, the program provides professionals with graduate training in the social, psychological, and physical aspects of aging, as well as the administration and management of businesses and organizations providing long-term care services.

For more information, please visit [gero.usc.edu/masters-programs](https://gero.usc.edu/masters-programs).



*"I can say with complete confidence that the MHA program has pushed me to think in new ways, question existing dynamics and expand my perspective."*

Salem Hawatmeh, MHA '17  
Process Architect, Keck Medicine of USC



*"The MHA residency is an invaluable experience that the Price School provides, and without it I would not have gotten the administrative fellowship that I am in today."*

Sydney Blakeley, MHA '18  
Administrative Fellow, Sutter Health





# Dollinger Master of Real Estate Development

## *Building our communities*

Real estate developers are the impresarios of the built environment. They orchestrate the talents of many players and balance the wants and dreams of various constituents touched by development projects. It is the job of real estate professionals to discover how we want to live and work—and to provide the settings accordingly. In many ways, real estate owners and operators create the urban landscape, working within a complex system of finance and governance to tackle the challenge of converting undeveloped or under-utilized resources into homes, employment centers, and places of recreation and commerce. With the excitement of finding place-based solutions to the unique set of problems presented by a real estate project, there also are the risks, rewards, and responsibilities that come with making our built environments more habitable and prosperous.

Increasingly, community groups, government agencies, other property owners, and even the media are becoming involved in the real estate development process. The capital markets, political and regulatory context, and major players change so rapidly that it is difficult to remain informed, let alone competitive. Today's industry leaders require advanced training that prepares them to deal with an increasingly technical and interdisciplinary field.

In this rapidly evolving industry, real estate professionals must address pressing questions, such as:

- What are the drivers of job growth and how will that impact the demand for office space?
- How will cities be re-shaped when driverless cars are the norm?

- What are the return thresholds for institutional capital and how does this impact investment in real estate?
- How will retail centers remain relevant with the growth of online shopping?
- How will concerns over gentrification impact the ability to meet demand for housing?
- How is the change in the distribution of goods redefining the use of industrial space?

### **THE DOLLINGER MASTER OF REAL ESTATE DEVELOPMENT PROGRAM**

Established in 1986, the Dollinger Master of Real Estate Development (MRED) program at the USC Sol Price School of Public Policy is one of a small number of





Photo credit: David Crane

*“In the MRED program, I learned the whole process A to Z, acquiring a piece of land, underwriting it appropriately, going through the entitlement process, the construction, sale, etc. Then I was able to implement those skills in the real world and continue to build upon them.”*

**Adam Daneshgar, MRED '09**  
Principal, Langdon Street Capital

graduate degree programs in the country focused on real estate, and one of the most highly regarded.

The MRED program is well established and prepares graduates for key positions in real estate development and investment. The program does this by delivering a strong academic framework on which professional practice is built. Courses combine lectures, case analyses and active engagement with the industry so students experience and master all facets of real estate’s tasks and challenges: finance and deal structuring, market analysis, site planning, political approvals, and project management; and across all product types: residential, retail, office, industrial, and hospitality.

MRED students are innovative thinkers, drawn to risks and rewards concomitant to the real estate profession. Hailing from across the United States and throughout the world, students are attracted to Southern California for direct exposure to a plethora of cutting-edge development projects. MREDs bring a breadth of professional training. The classroom experience is enriched by discussions among students with backgrounds in architecture, city planning, banking, law, commercial real estate brokerage, construction, investment banking, real estate asset management and acquisitions, and development.

“Our students share the tenacity and desire to have an impact on the built environment and influence our policy to shape our communities and cities for the better,” says Professor Richard Green, Director, Department of Policy Analysis and Real Estate.

**ADMISSION AND SCHOLARSHIP DEADLINE**

**Summer** February 1

**PROFESSIONAL DEVELOPMENT**

Outside the classroom, students are encouraged to reflect on the roles they would like to play in shaping our cities. Through career counseling, guest speakers in classes, networking opportunities with alumni, and mentoring programs, students gain an understanding of the full range of career options in real estate.

The USC Graduate Real Estate Association (GREA) provides a forum for students to establish their network of contacts, a vital resource for the industry. Each year, GREA hosts alumni speaker panels, site visits to projects under construction, and opportunities to meet with real estate employers.

The USC Lusk Center for Real Estate is renowned as one of the most prominent real estate research centers in the world. Each year, Lusk convenes industry leaders, students, and faculty in seminars, workshops, symposia, and forums to examine the current state of the industry and to anticipate future opportunities and challenges.

For more information, please visit [lusk.usc.edu](http://lusk.usc.edu).



The annual Women in Real Estate luncheon is designed to address unique challenges faced by women in the real estate field.

MRED Program Characteristics 2017-18 Academic Year	
Total Enrollment	43
Enrolled Full Time	72%
Underrepresented	38%
International	20%
Outside Southern California	25%
# Entering Students	33





# International Programs

## Bringing global home

In this era of globalization, the arena of professional practice is an international one. Leaders must be adept at addressing issues that arise both locally and globally. Issues of sustainability and the environment, health, infrastructure, public finance, governance, the role of nonprofits, economic development, changing demographics, terrorism, and leadership are increasingly important and transcend national boundaries. Successful leaders must have the skills to address these issues from an international and comparative perspective as well as an understanding of the roles of national and local governments, non-governmental organizations, and private businesses in different societies in solving these increasingly complex problems.



*“As a program conceived from the international experiences of its founders and supported by globally experienced scholars, IPPAM is the best place for international government scholars who wish to advance their skills in governing their society.”*  
Friezca Rara Jutta,  
IPPAM ’16  
2015 World Bank SPIRIT  
Scholarship Recipient

### MASTER OF INTERNATIONAL PUBLIC POLICY AND MANAGEMENT

The International Public Policy and Management (IPPAM) program offers a Master of International Public Policy and Management (MIPM) degree designed for international students and U.S. students working in global settings. This executive program targets early to mid-career professionals with experience in government, nonprofit agencies, or business firms engaged in the design, planning, and management of social programs and services.

Courses foster the critical thinking, problem-solving, and consensus-building skills needed to design innovative policy reforms and manage programs. The 32-unit curriculum includes an 18-unit core focused on economics, data analysis, policy analysis, management, and program evaluation. Students develop an area of specialization through 14 units of electives. Specializations include: public sector management and finance; policy methods; health management and policy; educational planning and management; urban planning and infrastructure management; transportation planning; nonprofit management; international development; social justice, media and communications; and business and trade policy.

Most students begin the IPPAM program in June. Fall semester admission can be accommodated for those whose organizations and governments require a fall start date. The degree can be completed in 18 to 24 months of study.

For more information, please visit [priceschool.usc.edu/ippam](http://priceschool.usc.edu/ippam).

### ADMISSION DEADLINE

**Summer** March 15 final deadline

### IPPAM PROGRAM CHARACTERISTICS 2017-18 Academic Year

Total Enrollment	76
New Students (summer and fall)	42
Enrollment Full Time	90%
International	86%
Average Age	29
Average Years of Work Experience	4.6

### CERTIFICATE IN INTERNATIONAL POLICY AND PLANNING

Underscoring comparative differences in policy approaches and governance institutions across countries, the Price School’s graduate Certificate in International Policy and Planning strengthens students’ understanding of global policy, planning, and public management issues. It builds a core foundation of knowledge about the governing institutions and agreements that operate on a global level, and better prepares students for the

professional demands of the global arena.

For more information, please visit [priceschool.usc.edu/certificate-in-international-policy-and-planning](http://priceschool.usc.edu/certificate-in-international-policy-and-planning).

### INTERNATIONAL LABS

Each summer, the USC Sol Price School of Public Policy offers one or more international labs, which allow students to put their knowledge into practice by providing consulting services in a setting outside the United States.

“It’s not a luxury anymore to have an international fabric to your school,” says Jack H. Knott, dean of the Price School. “It’s essential for the way we train students and the kind of research we do.”

The Price School’s ongoing relationships with organizations that span the globe enable the school to offer students unique, multifaceted labs every year in Asia, Latin America, and Europe.

Recent programs “brought global home” by sending graduate students — across all of Price’s degree programs — abroad to do research on housing policy issues in São Paulo, Brazil; social media strategies for public engagement in Dublin, Ireland; and cross-border issues between Hong Kong and Shenzhen in China.

For more information, please visit [priceschool.usc.edu/initiatives/international](http://priceschool.usc.edu/initiatives/international).

### INTERNATIONAL EXECUTIVE EDUCATION

The Price School provides executive training to foreign government officials and managers from international organizations through several formats. One option is to

enroll in existing courses offered through our Master’s degree or certificate programs. Another option is to invite Price faculty to conduct workshops overseas for a targeted audience or specific agency. Price also provides workshops at USC for visiting delegations on a mutually agreed upon theme or set of issues tailored to the interests of the visiting agency.

The Price School offers executive training in the following fields:

- Public Sector Leadership / Comparative Governance
- Municipal Finance and Mitigating Risks of Bankruptcy
- Economic Development and Growth
- Housing Policy and Land Use
- Infrastructure and Transportation Planning and Finance
- Civic Engagement and Consensus Building
- Project Management and Design Thinking

### OPPORTUNITIES FOR PROFESSIONAL DEVELOPMENT AND MENTORING

Because of our locations in Los Angeles and Sacramento, the Price School has a long tradition of civic engagement within the community, and many of our alumni are in key leadership roles in public, private, and nonprofit organizations that are in close proximity to USC. The Price School, therefore, is in a position to provide professional development and mentoring opportunities to foreign officials participating in the school’s international executive education programs.







**Alumni**

Known as the Trojan Family, the USC alumni network is life-long and worldwide. More than 375,000 living alumni are part of the Trojan Family and can be found in positions of leadership all over the world.

To learn about the Price School's alumni, go to [priceschool.usc.edu/alumni](https://priceschool.usc.edu/alumni).



# Executive and Leadership Programs

## Advancing professional careers

In addition to offering traditional graduate and undergraduate degree programs, the USC Sol Price School of Public Policy offers an array of short-term and long-term executive educational opportunities. Our programs instill a multidisciplinary and problem-solving ethic, focus broadly and inclusively on the issues, constituencies, structures, and institutions engaged in public life; encourage innovation, entrepreneurship, experimentation, and collaboration; and emphasize both a domestic and global perspective. The Price School’s executive and leadership programs provide mid-level and senior managers professional development opportunities to advance their careers and impact society.

### EXECUTIVE ACADEMIC PROGRAMS

#### EXECUTIVE MASTER OF LEADERSHIP

The Executive Master of Leadership (EML) degree program is designed as a profound learning experience for mid-senior level managers with diverse backgrounds in government, business, and the non-profit sectors who want to assume expanded leadership roles and build leadership capabilities for the 21<sup>st</sup> century.

The program’s distinguishing features include:

- A curriculum that aims to build emotionally intelligent and values-centered leaders who make a significant difference in their organizations and society.
- A cohort experience in which personal strengths, developmental gaps and management styles are explored.
- A multidisciplinary approach taught by world-class faculty and practitioners. (Bullet should be flush with those above it)

The 28-unit curriculum comprises four core courses and three electives that can be completed in a 14-month period in an intensive format. The core courses concentrate on four dimensions of leadership

including, understanding self, teams, organizations and institutions. There is an emphasis on action learning, reflection, and practical application to develop leaders who will excel in an era of rapid change and tremendous uncertainty.

For more information, please visit [priceschool.usc.edu/eml](https://priceschool.usc.edu/eml).

**ADMISSION DEADLINE** April 15

#### EML PROGRAM CHARACTERISTICS 2017-18 Academic Year

Average Years of Management Experience	7-15
Average Cohort Size	20-30
Public Sector	50%
Private Sector	30%
Nonprofit Sector	20%







*“USC Price’s EML program exceeded my expectations and nurtured my development as a leader through curricula and personal mentoring by my instructors. The growth I have experienced is invaluable and I would encourage any graduate student looking for a life-changing experience to consider this program.”*

### Nwaka Onwusa, EML ’17

Curator, The GRAMMY Museum at L.A. Live, Los Angeles

#### EXECUTIVE MASTER OF HEALTH ADMINISTRATION

The USC Sol Price School of Public Policy offers an Executive Master of Health Administration (EMHA) degree. Graduates of the EMHA are poised to advance or transition their careers in health management and policy. See page 37 for more information.

#### MASTER OF INTERNATIONAL PUBLIC POLICY AND MANAGEMENT (IPPAM)

The USC Sol Price School of Public Policy offers a Master of International Public Policy and Management degree. This executive program is for mid-career professionals with experience in government, nonprofit agencies or business firms engaged in the design, planning, and management of social programs and services. See page 42 for more information.

#### USC ROSS MINORITY PROGRAM IN REAL ESTATE

The USC Ross Minority Program in Real Estate is an educational platform providing critical skills to women and minorities and offering graduates the opportunity to participate in leadership roles and establish a pathway for success within the real estate industry. Our mission is to expand the pool of talented professionals and broaden options for investment in urban communities. The Ross Program includes a Winter Session and a Summer Session. The curriculum is concentrated in real estate finance, delivered by notable USC faculty and experienced real estate practitioners. A highlight of the program is a team case study allowing students to apply and integrate what they’ve learned in a challenging “real world” project.

For more information, please visit [lusk.usc.edu/ross](http://lusk.usc.edu/ross).

#### EXECUTIVE EDUCATION AT USC PRICE

The USC Price School offers several specialized non-degree executive programs, all designed for experienced professionals to advance knowledge and influence in their field.

For example, the USC Sol Price Center for Social Innovation’s executive education program — the Southern California Symposium — challenges local leaders to think deeply and collaboratively about the region’s future and to develop long-term solutions. The Law Enforcement Advanced Development Certificate Program (LEAD), part of the USC Price Safe Communities Institute and the only program of its kind in the nation, trains police officers in community policing and enhances their understanding of vulnerable populations. The Local Leaders Program, offered by the Bedrosian Center, gives elected and appointed officials a substantive grounding on important policy issues facing decision-makers.

Programs take place on both the USC main campus in Los Angeles and at the USC State Capital Center in Sacramento. Below is a listing of executive education programs offered by USC Price and website addresses for more information:

#### Creating Safe Communities

- Law Enforcement Advanced Development Certificate Program (LEAD)
- Public Safety Leadership Certificate Program
- Executive Leadership Certificate Program
- Safe Communities in an Unsafe World  
- [sci.usc.edu](http://sci.usc.edu)

#### Ethical Decision-making

- Foundations of Decision Analysis
- Value Focused Thinking
- Ethical Considerations in Enterprise Decision-making
- Strategic Decision-making in Organizations  
- [decide.usc.edu](http://decide.usc.edu)

#### Governance and Leadership

- Local Leaders Program
- Local Leadership Seminars  
- [bedrosian.usc.edu/exed](http://bedrosian.usc.edu/exed)



*“The director, faculty, and teachers in the Executive Education program are well-known and respected in their fields and in our local government circles. My goals of expanding my knowledge of public policy and being a better leader were certainly met at USC Price.”*

### Nancy Tragarz

USC Price Executive Education Program Alumna 2012; Attorney at Prenovost, Normandin, Bergh & Dawe, APC; Mayor, City of Walnut; Executive Board Member, California Contract Cities Association

- National Conference of State Legislatures Legislative Staff Management Institute
- County of Los Angeles Executive Leadership Development Program
- California Institute for Behavioral Health Solutions Leadership Institute  
- <https://bit.ly/2pJRom6>

#### Inclusiveness in Real Estate

- Ross Minority Program in Real Estate  
- [lusk.usc.edu/ross](http://lusk.usc.edu/ross)

#### Managing Global Challenges and Leadership

- Executive Program in Counter-Terrorism  
- [create.usc.edu](http://create.usc.edu)

- Short-term International Executive Education  
- <https://bit.ly/2OZB2PK>
- Global Executive Continuing Education program  
- <https://bit.ly/2y26rKo>
- Global Leaders Program  
- [bedrosian.usc.edu/exed](http://bedrosian.usc.edu/exed)

#### Strategic and Collaborative Social Innovation

- The Southern California Symposium  
- [socialinnovation.usc.edu](http://socialinnovation.usc.edu)





# Doctoral Programs

## Impact through scholarship

The Price School offers doctoral programs including a PhD in Public Policy and Management, PhD in Urban Planning and Development, and Doctor of Policy, Planning and Development. The programs emphasize rigorous theoretical and methodological foundations combined with individualized study in substantive areas of policy, governance and planning. The doctoral programs are renowned for exceptional student and faculty engagement and mentorship. The USC Sol Price School of Public Policy ranks second among all graduate schools of public affairs by *US News & World Report* (2019).



*“What makes USC unique is that not only did I receive rigorous training in research methods and theory from leading scholars in my field, I also learned how scholarship can be used to frame and shape policy and practice.”*  
Vincent Reina, PhD '16  
Assistant Professor, University of Pennsylvania

### PHD PROGRAMS

#### DOCTOR OF PHILOSOPHY IN PUBLIC POLICY AND MANAGEMENT (PhD PPM)

The PhD in Public Policy and Management produces researchers and scholars who shape the direction of public affairs research. The curriculum combines interdisciplinary training in public policy and management as well as rigorous methodological training, along with disciplinary training in economics, sociology, political science, or organizational theory.

Working closely with faculty mentors, PPM students develop substantive expertise in core areas within the Price School or within a related disciplinary field in another USC department. Examples include:

- Civic engagement
- Economic development
- Governance
- Health policy and economics
- Homeland security
- International development
- Network theory
- Nonprofits and philanthropy
- Social policy
- Sustainability and the environment
- Transportation and infrastructure

The curriculum, which includes research and teaching seminars, to support dissertation development ensure that

graduates are prepared for positions at leading research universities and institutes throughout the U.S. and the world.

Price School graduates hold tenure-track positions at leading universities such as Syracuse University; University of Pennsylvania; The Ohio State University; University of Georgia; University of Miami; University of Kansas; University of Texas-Austin; City University of New York; University of Oklahoma; Peking University; and Seoul National University. Research positions include placement at the Public Policy Institute of California; the USC Center for Risk and Economic Analysis of Terrorism Events (a federally funded Homeland Security Center); and the Korean Institute for Public Administration.

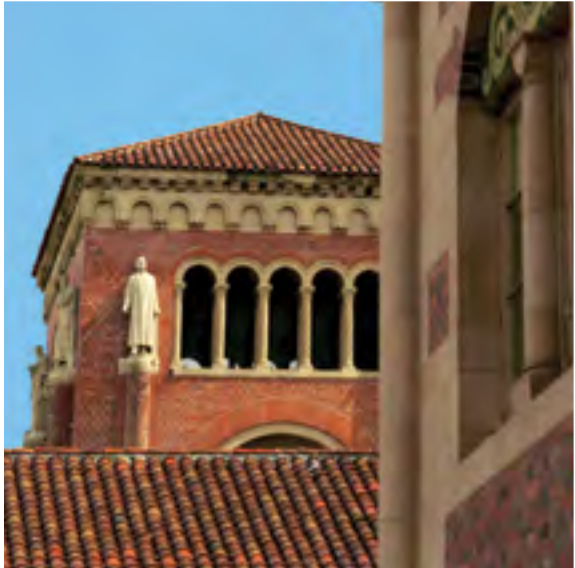
For more information, please visit [priceschool.usc.edu/phd](https://priceschool.usc.edu/phd).

**ADMISSION DEADLINE** December 1

#### DOCTOR OF PHILOSOPHY IN URBAN PLANNING AND DEVELOPMENT (PhD UPD)

The PhD in Urban Planning and Development prepares students to be academics and scholars who research contemporary urban problems and contribute new ideas and innovative solutions to the critical issues facing communities here and abroad.

COMBINED PhD PROGRAM CHARACTERISTICS 2017-18 Academic Year	
Total Enrollment	50
Underrepresented	26%
International	42%
Outside Southern California	52%
New Students (fall)	13







*“I strongly believe that the great research environment, supportive financial resources, and mentorship that I received from the USC Price PhD program and faculty members helped me stretch and grow, and become an independent researcher.”*

Eun Jin Shin, PhD '17

Assistant Professor, Yale-NUS College, Singapore

The majority of the world’s population now lives in cities; in 20 years, the total will swell to two-thirds. As the specter of explosive urban growth looms, it also presents contemporary challenges in practice, such as: demand for shelter; community livability; sustainable development; infrastructure deficit; climate change; social equity and environmental justice; and response to the demographic shifts of an aging and multicultural population. These challenges shape the frontiers of research and scholarship that will engage doctoral students and faculty alike.

Through advanced courses in planning theory, urban development, and methodology, students obtain a strong foundation from which to launch their scholarly careers.

Building on the strengths of the faculty, below are examples of fields students may focus on:

- Economic development
- Environment and sustainability
- Housing and real estate development
- International development
- Social and community planning
- Transportation and infrastructure
- Urban form and design
- Metropolitan and regional growth

The culture of the doctoral program requires participation in research and teaching seminars as well as presentation of papers at academic and professional conferences. Graduates secure tenure-track and research positions at leading research universities and institutes throughout the U.S. and the world including Oxford University; the University of California, Los Angeles; University of Washington; University of Illinois at Urbana-Champaign; University of Oregon; Korea Transportation Institute; University of Cincinnati; University of California, Irvine; Cardiff University (UK); Queen’s University (Canada); Seoul National University, Yale-NUS College; and the National

University of Singapore. Graduates obtain prestigious post-doctoral fellowships at institutions such as Harvard University; University of Pennsylvania; The Ohio State University; and University of California, Berkeley.

For more information, please visit [priceschool.usc.edu/phd](http://priceschool.usc.edu/phd).

ADMISSION DEADLINE December 1

FUNDING

All PhD students are fully supported for four years through a combined fellowship and graduate assistantship that provides for tuition, stipends, and health and dental insurance. Students beyond their fourth year of study are supported through teaching or research assistantships, or funding from USC or other outside sources.

PROFESSIONAL DOCTORATE PROGRAM

DOCTOR OF POLICY, PLANNING, AND DEVELOPMENT

The USC Price School offers a Professional Doctor of Policy, Planning, and Development degree. This program appeals to mid-career professionals across the public, private, and nonprofit sectors who seek to enrich their knowledge and academic skills as well as deepen their understanding of how to transform organizations, communities, and societies.

The Doctor of Policy, Planning, and Development program prepares professionals for expert leadership in government agencies, consulting firms, institutional investment firms, health care organizations, development firms, nonprofit organizations, and social work and education systems. The program provides technological



*“I am humbled to be a part of a world-class university and to have graduated from an equally impressive DPPD program — academic practitioners who collectively seek scholarly ways to contribute to the greater good. If you ‘dare to dream,’ this is the program that can make it a reality.”*

Erroll Southers, DPPD '13  
Professor of the Practice of Governance; Director, Safe Communities Institute

expertise and knowledge that nurtures the vision and creativity that students need to be effective leaders in their chosen arena.

The Doctor of Policy, Planning, and Development program admits senior decision makers and offers an opportunity to expand and deepen their professional abilities and achievements without leaving their current employment.

Students routinely partner with colleagues across disciplines to find solutions to specific problems through field-of-practice trials and real-world projects. Throughout the process, the program inspires new ways of thinking and enhances and expands the existing skills of each student.

World-renowned Price School faculty teach both core and elective courses. Faculty also mentor students to shape and execute doctoral research projects grounded in scholarly literature, utilizing rigorous methodologies to achieve outcomes with implications for business, politics, and the social world.

Program goals include:

- To support accomplished professionals in advancing knowledge, enhancing skills, and expanding leadership capacities in fields of policy, planning, and development
- To create a unique educational environment that immerses seasoned managers and analysts in rich interdisciplinary dialogue through a common cohort

experience with a focus on innovative ways to address local and global issues

- To establish a repertoire of new problem-solving skills and theoretical paradigms that can significantly enrich decision making and support thinking about policy reform in public and private sectors
- To equip professionals not only with sophisticated analytical tools, but with the sensitivity and cultural awareness needed to occupy leadership positions within their field anywhere in the world

ADMISSION DEADLINE February 1

DPPD PROGRAM CHARACTERISTICS  
2017-18 Academic Year

Total Enrollment	29
Enrolled Full Time	41%
Underrepresented	55%
Female	48%
Outside Southern California	14%





# Undergraduate Program in Urban Studies and Planning

## Shaping modern cities

Every human problem is an urban problem, and every human advancement occurs in cities. For the first time in history, half of the world’s population lives in cities. Through rigorous coursework and practical experience, the Price School’s Bachelor of Science in Urban Studies and Planning gives you the tools you need to effect real and lasting change in urban environments.

This degree is for students who want to have an impact on cities by: increasing opportunities for affordable housing; designing healthy neighborhoods and communities, promoting environmental sustainability, fostering social justice and equity, creating thoughtful and effective city planning, working with government, business, and community groups to develop solutions to local, regional, national, and international problems.

### PROGRESSIVE DEGREES

Select Price students can earn a master’s degree while completing their undergraduate degree. In five years, they emerge with a Master of Health Administration, Master of Planning, Master of Public Administration, or Master of Public Policy degree. In six years, in partnership with USC’s Gould School of Law 3+3 Program, they can complete a law degree. Each option prepares students to excel in the professional world.

### INTEREST EXPLORATION

Price minors are available to USC students in:

- Construction Planning and Management
- Health Administration
- Health Policy
- International Policy and Management
- Law and Public Policy
- Nonprofits, Philanthropy, and Volunteerism
- Real Estate Development
- Urban and Sustainable Planning

### FROM EDUCATION TO CAREER OR GRADUATE SCHOOL

USC Price maintains a comprehensive job opportunities database, updated continuously and available to current

Price students and alumni. You will also have unique opportunities to connect with employers locally, nationally, and globally through internships and the capstone experience.

Graduates are well-positioned for immediate employment or competitive graduate programs.

### COMBINING ACADEMIC RIGOR WITH PRACTICAL EXPERIENCE

Our philosophy of teaching and learning balances the study of theory from many disciplines with skills to help graduates address real-world problems.

- **Major Classes** are taught by full-time Price faculty as well as distinguished practitioners. Instructors often invite leaders in urban issues for class discussions.
- **Internship** A semester-long internship project will give you practical experience with an organization that addresses urban problems.
- **Capstone Project** For a semester you will work with a client on a real-world urban issue in a city such as Los Angeles, Detroit, or Shanghai. You will explore the problem from several points of view and produce a final project that includes recommendations for solving it.
- **Expanding Communication Skills** Strengthen your writing, public speaking, and communication skills to converse more effectively with diverse urban communities. Use geographic information systems, social media analysis, and visualization tools to address issues facing cities.
- **The Living Laboratory of Los Angeles** USC, located in the heart of Los Angeles, provides a vibrant, world-class location for you to explore the dynamics of a large city and to experience, identify, and analyze

urban problems. Through participation in community group meetings; interviews with nonprofit, government, and private sector leaders; and in-class discussions, you will gain expertise in the history, economics, and politics of urban issues in a national and international context.

### RESEARCH OPPORTUNITIES

Price School students gain access to exceptional research opportunities, particularly through the school’s Student Undergraduate Research Experience (SURE) program. Students often collaborate on studies with a Price faculty member. Recent projects include:

- An exploration of the impact that the Olympic Games have on the cities that host them
- A comparison of past and present multifamily housing design to inform future housing production in Los Angeles
- A study of the central train system in Brisbane, Australia focusing on urban renewal strategy

For more information, please visit [priceschool.usc.edu/programs/undergraduate/bs-public-policy](https://priceschool.usc.edu/programs/undergraduate/bs-public-policy).

### ADMISSION DEADLINES

<b>Freshman</b>	
<b>Fall</b>	Jan. 15
<b>Fall scholarship:</b>	Dec. 1
<b>Transfer</b>	
<b>Fall admission and scholarship:</b>	Feb. 1

### BSUSP PROGRAM CHARACTERISTICS 2017-18 Academic Year

<b>Total Enrollment</b>	113
<b>Underrepresented</b>	52%
<b>International</b>	4%
<b>Outside Southern California</b>	45%
<b>Students Taking Minors</b>	27%





# Undergraduate Program in Public Policy

## Practical experience for community engagement

The Price School Bachelor of Science in Public Policy offers rigorous academic coursework in economics, political science, quantitative methods, and leadership with the practical experience needed to engage effectively with communities and address solutions to large-scale local, regional, national, and international problems. Price faculty are actively engaged in public policy issues that transcend national boundaries and bring together leaders in public, private, and nonprofit arenas.

Students in this degree are interested in ensuring access to and affordability of high-quality health care, preserving our environment while fostering economic growth, finding innovative solutions to social problems, and working with government, business, and community groups to lead sustainable change.

They will gain a balanced, well-rounded liberal arts education with an opportunity to earn a minor and, in some cases, a double major or progressive degree; quantitative and qualitative skills to formulate, evaluate and implement different policy solutions; opportunities to develop and practice writing, public speaking, and communication skills empowering you to communicate effectively with constituents from diverse backgrounds; a network of faculty, alumni, and fellow students to help you advance in your career; an understanding of the roles and limitations of government, nonprofits, foundations, and private organizations in the policy-making process; strategies for navigating political and economic landscapes to achieve objectives.

### RESEARCH OPPORTUNITIES

Price School students gain access to exceptional research opportunities, particularly through the school's Student Undergraduate Research Experience (SURE) program. Students often collaborate on studies with a Price faculty member. Recent projects include:

- Female empowerment and adolescent health and well-being in Ghana and South Africa
- An exploration of the positive and negative impacts of privatization on Spain's health system
- A study to advance cancer screening guidelines, designed and administered with 6,000 primary health care providers
- A comparison of the nutrition resource environment in South Los Angeles with the nutrition

resource environment of the Garment District in New York City

For more information, please visit [priceschool.usc.edu/programs/undergraduate/bs-urban-studies-planning](https://priceschool.usc.edu/programs/undergraduate/bs-urban-studies-planning).

### INTEREST EXPLORATION

Price minors are available to USC students in:

- Construction Planning and Management
- Health Administration
- Health Policy
- International Policy and Management
- Law and Public Policy
- Nonprofits, Philanthropy, and Volunteerism
- Real Estate Development
- Urban and Sustainable Planning

### COMBINING ACADEMIC RIGOR WITH PRACTICAL EXPERIENCE

Our philosophy of teaching and learning balances the study of theory from many disciplines with skills to help graduates address real-world problems.

- **Faculty Classes** are taught by full-time Price faculty as well as distinguished practitioners. Faculty regularly invite leaders and influencers in specific policy issues for classroom discussions.
- **Internship** You will participate in a semester-long internship intended to give you practical experience working in an organization that addresses social problems.
- **Capstone Project** In the last semester, you will work with a local, national, or international client on a current problem, exploring the issue from many points of view and producing recommendations that are frequently included in the client's final policy.

- **The Living Laboratory of Los Angeles** Los Angeles is a city rich in ethnic and economic diversity and is home to people from more than 140 countries who speak 224 different languages. USC, located in the heart of Los Angeles, provides you with opportunities to explore the dynamics of policymaking and leadership, and to experience and analyze social problems. You will meet with nonprofit, government, and private-sector leaders to understand the history, economics, and politics of social issues on local, national, and international levels.

### GRADUATE SCHOOL OR A FULL-TIME JOB

Public Policy graduates will be prepared to enter top law, public policy, education policy, health policy, and urban planning graduate programs, including those at the Price School. The practical application components of the program also make graduates competitive for entry-level jobs with public, private, and nonprofit organizations.

### PROGRESSIVE DEGREES

Select Price students can earn a master's degree while completing their undergraduate degree. In five years, they emerge with a Master of Health Administration, Master of Planning, Master of Public Administration, or Master of Public Policy degree. In six years, in partnership with USC's Gould School of Law 3+3 Program, they can complete a law degree. Each option prepares students to excel in the professional world.

### ADMISSION DEADLINES

<b>Freshman</b>	
<b>Fall</b>	Jan. 15
<b>Fall scholarship:</b>	Dec. 1
<b>Transfer</b>	
<b>Fall admission and scholarship:</b>	Feb. 1

### BSPP PROGRAM CHARACTERISTICS 2017-18 Academic Year

Total Enrollment	113
Underrepresented	52%
International	4%
Outside Southern California	45%
Students Taking Minors	27%





# Undergraduate Program in Real Estate Development

## Influencing the community

The USC Sol Price School of Public Policy offers an innovative, interdisciplinary major that teaches students to not only understand the finance and investment facets of the field, but also the impact that real estate development has on communities. The evolving urban landscape of Los Angeles provides the perfect backdrop for this new program.



*“The real estate classes in the BRED program were super interesting, concrete and on point with what I wanted to be learning. Everyone was working together in teams and helping each other. In my job as an analyst at Hines, the supervisors are impressed that I had learned these advanced finance skills so early because most people don’t learn some of this material until a master’s program.”*  
Melissa Schem, BRED '18  
Analyst, Hines

“Cities all over America are grappling with the challenges of building enough housing to keep pace with growth,” says Professor Richard Green, Director of Policy Analysis and Real Estate. “There are no easy answers in today’s real estate environment, but we are equipping our students with the knowledge they need to ask the right questions.”

**THE BACHELOR OF SCIENCE IN REAL ESTATE DEVELOPMENT**  
This degree program builds upon the Price School’s 30-year commitment to real estate education. Successful real estate professionals must be able to grasp the many disciplines that shape real estate. The Price School’s BS in Real Estate Development provides the most comprehensive undergraduate real estate curriculum in the country and will prepare the next generation of real estate professionals. Students will gain training in real estate fundamentals, development, real estate market analysis, advanced finance investment, history of planning and development, and designing livable communities. This degree incorporates finance and capital markets, regional and city planning, architectural design, and public policy.

- The curriculum provides:
- A broad-based degree with marketable skills in real estate principles, real estate finance and investment, market analysis, underwriting, land use policy, and design — delivering a solid foundation for embracing an urbanizing 21<sup>st</sup> century.
  - Full-time faculty who advance scholarship in real estate and real estate professionals who bring industry knowledge to the classroom

The program has been designed specifically to engage students in the critical thinking required to understand

how real estate development influences our communities. Students will learn to envision real estate through the lenses of change and sustainability, and within the context of the past, present and future.

**PROFESSIONAL DEVELOPMENT**  
Outside the classroom, students are encouraged to reflect on the roles they would like to play in shaping our cities. Through career counseling, guest speakers in classes, networking opportunities with alumni, and mentoring programs, students gain an understanding of the full range of career options in real estate. Internship experiences provide direct exposure to the workings of real estate firms and allow students to apply skills learned in the classroom to real world situations.  
The USC Trojan Real Estate Association (TREA) provides a forum for undergraduate students to establish their network of contacts, a vital resource for the industry. Each year, TREA hosts alumni speaker panels, site visits to projects under construction, and opportunities to meet with real estate employers. For more information, please visit [usctrea.com](http://usctrea.com).

The USC Lusk Center for Real Estate is renowned as one of the most prominent real estate research centers in the world. Each year, Lusk convenes industry leaders, students, and faculty in seminars, workshops, symposia, and forums to examine the current state of the industry and to anticipate future opportunities and challenges.  
For more information, please visit [lusk.usc.edu](http://lusk.usc.edu).

**ALUMNI NETWORK**  
Building on the strength of the Price School’s Dollinger Master of Real Estate Development program, graduates will be able to tap into an extensive network of alumni and professionals who will help them advance throughout their careers.



BRED PROGRAM CHARACTERISTICS 2017-18 Academic Year	
Total Enrollment	329
Underrepresented	27%
International	3%
Outside Southern California	27%
Average Class Size (core)	32







#### USC's Motto

**PALMAM QUI MERUIT FERAT**, can be translated loosely from the Latin as "let whoever earns the palm bear it." The expression reflects the broad significance of palms, palm fronds and other branches of foliage as symbols of triumph, victory, ascension and regeneration in ancient times, and in particular may allude to the Roman custom of giving the victorious gladiator a palm branch as reward for prowess. USC adopted the motto in 1908.

Alluding as it does to accomplishment, righteousness and victory, USC's motto speaks to qualities that are as inherent to the university today as they were in 1908.

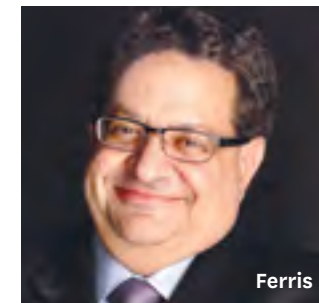


# USC Price Faculty

The faculty at the USC Sol Price School of Public Policy are an exceptionally accomplished and diverse group of teachers and internationally recognized scholars. In addition to educating tomorrow's leaders, Price School faculty conduct research that engages real-world problem solving and enriches the store of knowledge in their fields. They publish in the most prestigious journals, hold leadership positions in scholarly societies, receive research funding from highly competitive grants, and garner awards for their intellectual contributions.

Price School faculty are committed to excellence in teaching. Many faculty members teach at all three levels in the school — bachelor's, master's, and doctoral — and an equal number teach courses in more than one discipline. Faculty members have earned numerous awards for teaching, and several of them have been recognized by USC's Center for Excellence in Teaching for their work mentoring students and colleagues. Above all, faculty members inspire values that reflect the school's commitment to bettering communities and improving the quality of life for the people who live in them.

In addition to the faculty introduced in these pages, the Price School seeks out community leaders, scholars, and professional practitioners to serve as adjunct faculty, bringing their rich, varied perspectives and experiences into the classroom.



Ferris



Geffner



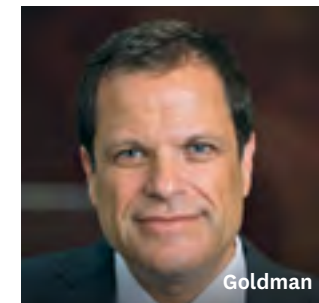
Ginsburg



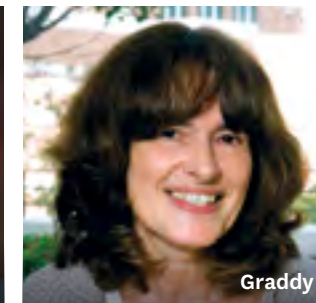
Gioia



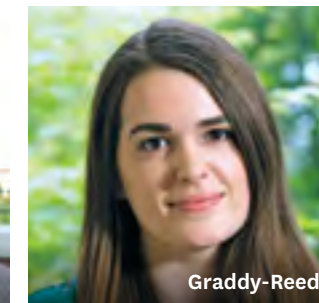
Giuliano



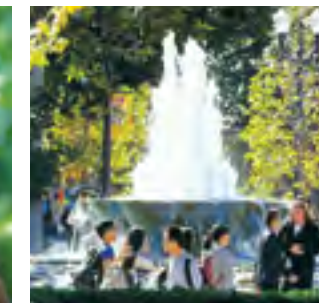
Goldman



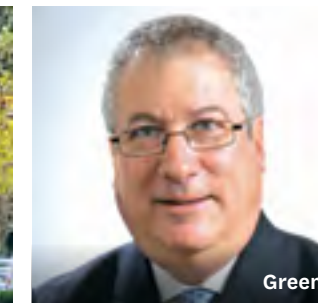
Graddy



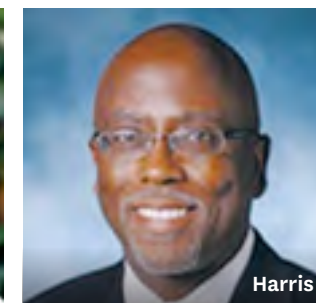
Graddy-Reed



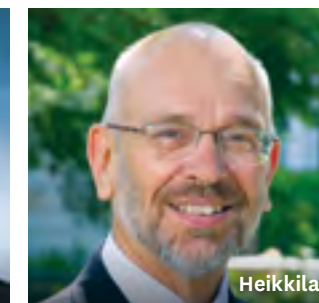
Green



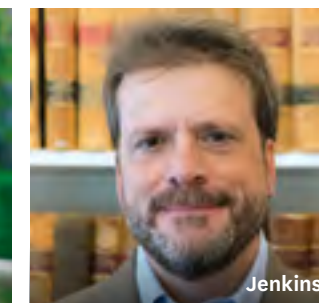
Greenwald



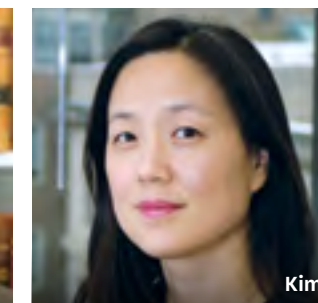
Harris



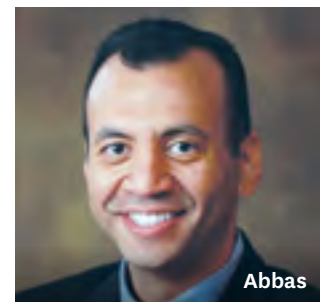
Heikkila



Jenkins



Kim



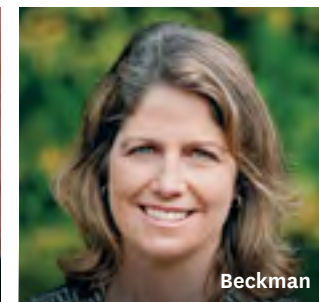
Abbas



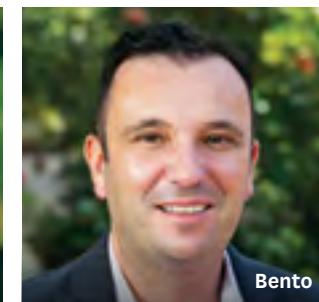
Aguila



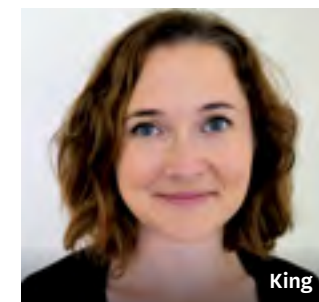
Banerjee



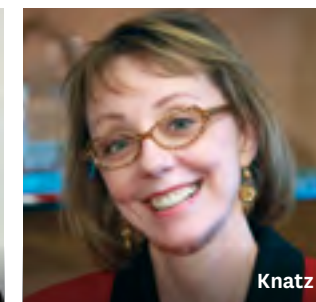
Beckman



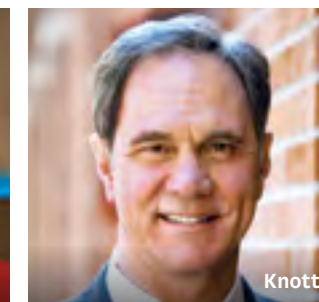
Bento



King



Knatz



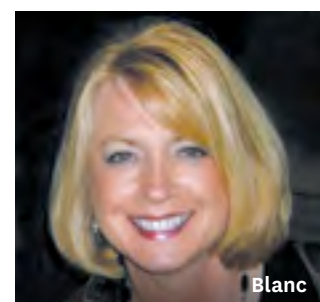
Knott



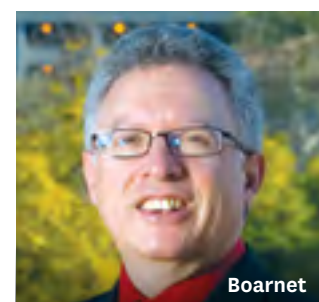
Krieger



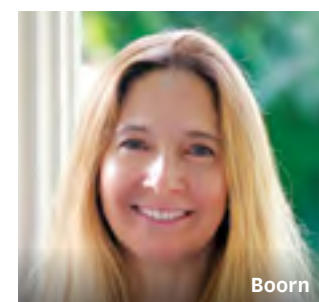
Lakdawalla



Blanc



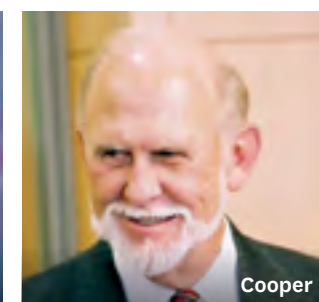
Boarnet



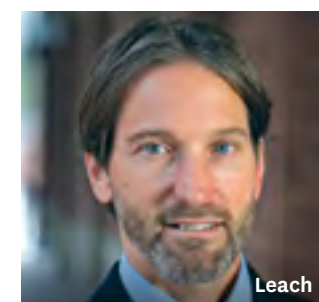
Boorn



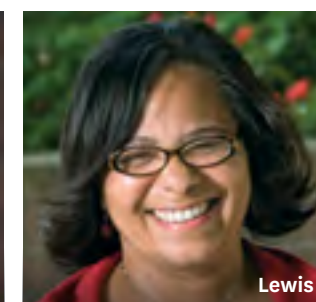
Chen



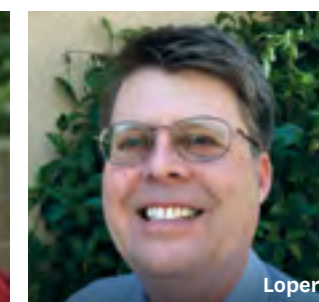
Cooper



Leach



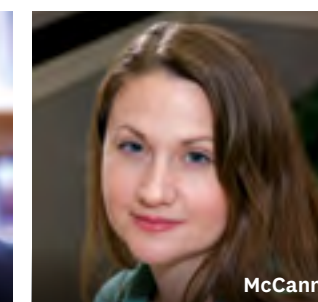
Lewis



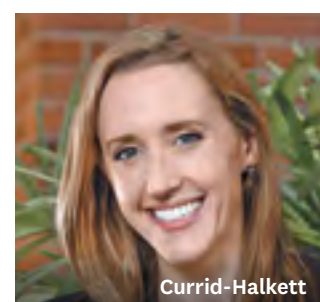
Loper



Mazmanian



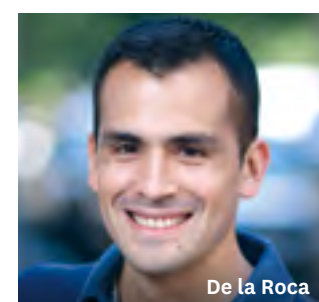
McCann



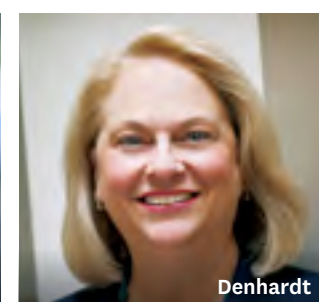
Currid-Halkett



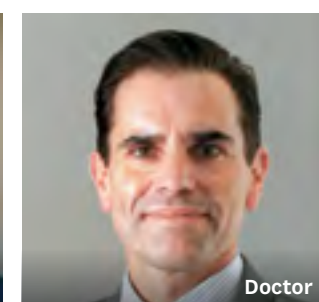
Dalton



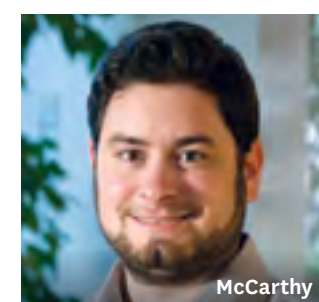
De la Roca



Denhardt



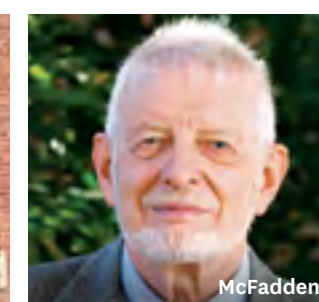
Doctor



McCarthy



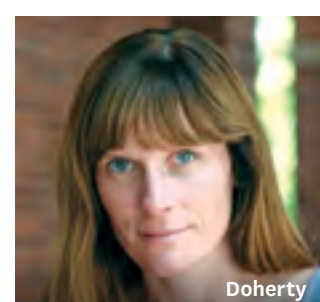
McFadden



Melnick



Miller



Doherty



Duquette



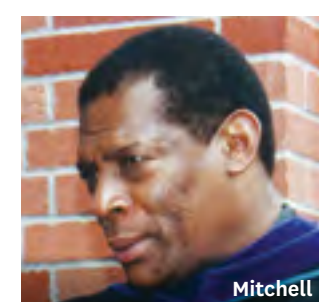
Esparza



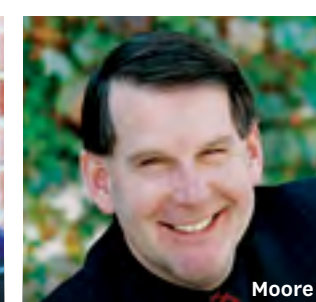
Eyer



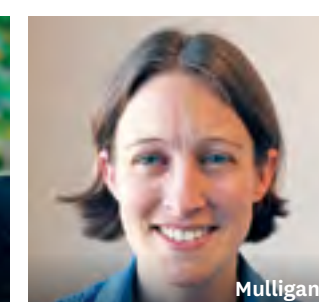
Falletta



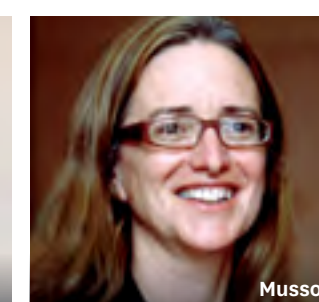
Mitchell



Moore



Mulligan



Musso



Myers





Natoli



Nichol



Ozaeta



Painter



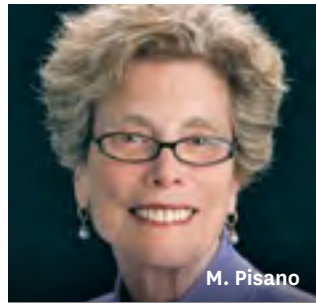
Petraeus



Phillips



J. Pisano



M. Pisano



Rawlings



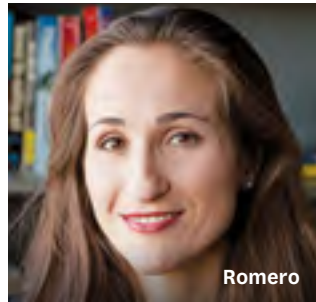
Redfearn



Resh



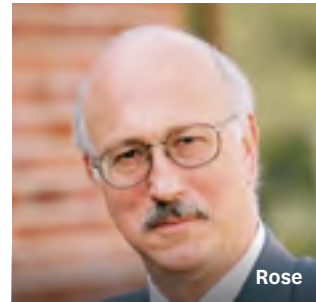
Robertson



Romero



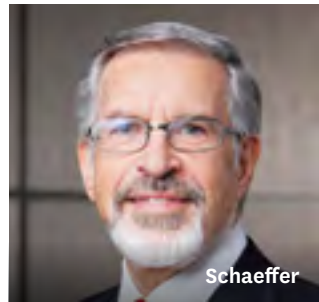
Romley



Rose



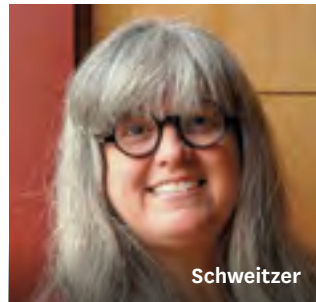
Rosen



Schaeffer



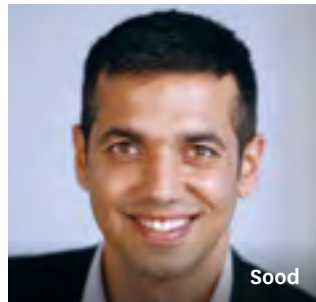
Schwarzenegger



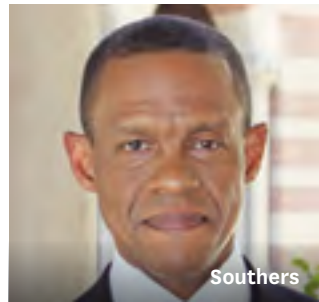
Schweitzer



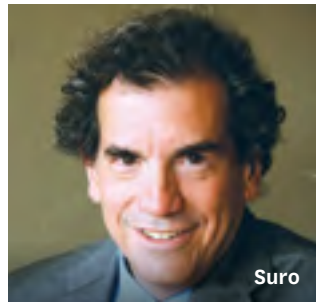
Sloane



Sood



Southers



Suro



Takahashi



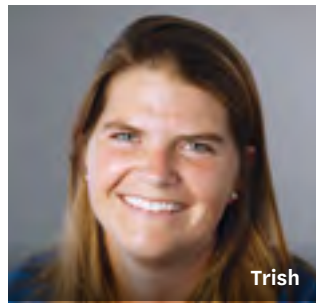
Talley



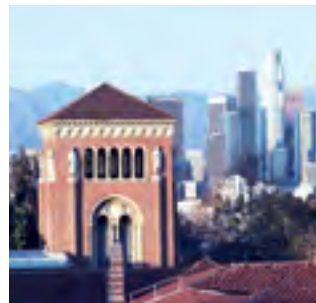
Tang



Thom



Trish



Van Nuys



Vertenten



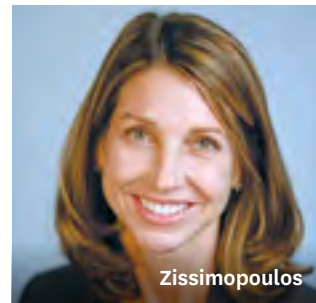
von Winterfeldt



Wei



Zerunyan



Zissimopoulos

**Ali Abbas**

Professor of Industrial and Systems Engineering and Public Policy; Director, The Neely Center for Ethical Leadership and Decision Making — Decision analysis, risk analysis, multi-attribute utility theory, data-based decision making

**Emma Aguila**

Assistant Professor — Economics of aging, labor economics, applied econometrics, program evaluation, development economics

**Tridib Banerjee**

Professor; James Irvine Chair in Urban and Regional Planning — Urban design, comparative urbanism, urban sprawl, developing world urbanization, planning theory

**Christine M. Beckman**

Professor — Organizational learning, inter-organizational networks, social innovation, and entrepreneurship

**Antonio M. Bento**

Professor — Environmental and energy economics, urban economics, public economics, transportation policy, climate policy, environmental regulation

**Tara Blanc**

Associate Professor (Teaching) — Civic engagement, leadership, public service ethics, political behavior

**Marlon Boarnet**

Professor; Chair, Department of Urban Planning and Spatial Analysis — Transportation, travel behavior, urban growth patterns, regional science, urban economics

**Mary Lynne Boorn**

Associate Professor (Teaching) — Principles of real estate, real estate finance and real estate development

**Alice Chen**

Assistant Professor — Health economics, labor economics, applied microeconomics

**Terry L. Cooper**

Maria B. Crutcher Professor in Citizenship and Democratic Values — Administrative ethics, administrative theory, citizen participation, neighborhood organizations, role of citizens

**Elizabeth Currid-Halkett**

Professor; James Irvine Chair in Urban and Regional Planning — Economic development, cultural economy, social networks, urban growth, economic geography

**Phil Dalton**

Professor of the Practice of Health Management and Policy — Health policy and management, national health care delivery

**Jorge De la Roca**

Assistant Professor — Urban economics, economic geography, labor economics, urban migration

**Janet Denhardt**

Chester A. Newland Professor of Public Administration — Organizational behavior, leadership, citizen engagement, governance

**Jason Doctor**

Associate Professor; Chair, Department of Health Policy and Management — Physician behavior and psychology, behavioral economics and health, patient choice and decision-making, health policy and implementation, treatment preferences, prescriptions, health informatics

**Kathleen M. Doherty**

Assistant Professor — American political institutions, bureaucratic delegation, administrative expertise, political and judicial oversight of the bureaucracy, public policy, pharmaceutical drug policy

**Nicolas Duquette**

Assistant Professor — Nonprofit economics, public finance, economic history

**Nicole E. Esparza**

Associate Professor — Nonprofit organizations, networks, philanthropy, and urban inequality

**Jonathan Eyer**

Research Assistant Professor — Environmental economics, energy economics, natural disasters, applied econometrics

**Liz Falletta**

Associate Professor (Teaching) — Architecture, urban design, design criticism

**James M. Ferris**

Professor; Emery Evans Olson Chair in Nonprofit Entrepreneurship and Public Policy; Director, Center on Philanthropy and Public Policy — Philanthropy, nonprofit economics, public finance, public policy, institutional analysis

**Carol J. Geffner**

Professor of the Practice of Governance, Management and Policy; Director, Executive Master of Leadership — Strategy, executive leadership, transformation and change

**Paul B. Ginsburg**

Professor of the Practice of Health Policy and Management, Director of Public Policy; USC Schaeffer Center; Director, USC-Brookings Schaeffer Initiative for Health Policy — Health policy, health care financing and delivery, health care markets

**Dana Gioia**

Judge Widney Professor of Poetry and Public Culture — Government cultural policy, arts and leadership, arts as economic development

**Genevieve Giuliano**

Professor; Margaret and John Ferraro Chair in Effective Local Government; Director, METRANS — Transportation policy, metropolitan spatial structure, travel demand, urban transportation

**Dana Goldman**

Distinguished Professor of Public Policy, Pharmacy, and Economics; Leonard D. Schaeffer Chair and Director, USC Schaeffer Center — Health economics and finance, health policy, preventive health care, health care reform, pharmaceutical regulation and innovation, precision medicine, value of delayed aging

**Elizabeth Graddy**

Professor; Jeffrey J. Miller Chair in Government, Business, and the Economy; Vice Provost for Academic and Faculty Affairs, USC — Institutional economics, governance, nonprofit organizations, industry structure

**Alexandra Graddy-Reed**

Assistant Professor — Public economics, philanthropy, nonprofits and social innovation, science and innovation policy

**Richard K. Green**

Professor; Director and Chair, USC Lusk Center for Real Estate; Chair, Department of Policy Analysis and Real Estate — Economics, housing markets, housing policy, tax policy, transportation, mortgage finance, urban growth

**Howard Greenwald**

Professor — Health service delivery, organizational behavior, survey design

**Michael E. Harris**

Professor of the Practice of Health Services Administration and Policy — Health care contracting, health care policy and reform, health care delivery business models, health care innovation and impact on health care delivery systems, prevention and wellness, patient access

**Eric Heikkila**

Professor; Director, Office of Global Engagement — Urban development, economic development, East Asian cities, urban economics, urban information systems



**Jeffery A. Jenkins**

Provost Professor of Public Policy, Political Science, and Law; Judith and John Bedrosian Chair of Governance and the Public Enterprise; Director, Bedrosian Center — American political institutions and development, Congress, political parties, lawmaking, separation-of-powers, political economy

**Annette M. Kim**

Associate Professor; Director, Spatial Analysis Lab — Housing and land use, international development and planning, East Asian urbanization; race, arts, and placemaking; critical mapping and urban analytics

**Janna King**

Assistant Professor — Delegation and democratic legitimacy, U.S. political institutions, Congress, the presidency, executive branch policymaking, lobbyists and policymaking

**Geraldine Knatz**

Professor of the Practice of Policy and Engineering — Seaport policy and management, maritime transportation, international trade, seaport sustainability

**Jack H. Knott**

Dean; C. Erwin and Ione L. Piper Chair and Professor — Political institutions and public policy, health policy, public management

**Martin H. Krieger**

Professor — Defense policy, aural and photographic documentation of Southern California, planning theory and design theory, urban spatial processes

**Darius Lakdawalla**

Professor; Quintiles Chair in Pharmaceutical Development and Regulatory Innovation — Economics of risks to health, medical innovation, economics of and organization of health care markets

**William Leach**

Associate Professor (Teaching) — Collaborative governance, economics, planning, social policy, environmental policy, health policy

**LaVonna B. Lewis**

Professor (Teaching); Director, Diversity and Inclusion Initiatives — American politics, public policy, interest groups, federal programs

**John Loper**

Associate Professor (Teaching) — Real estate development, real estate finance, urban and suburban development, master planned communities, urban design

**Daniel A. Mazmanian**

Professor — Environmental policy, policy implementation, sustainable communities, political science

**Pamela McCann**

Assistant Professor — American political institutions, bureaucratic delegation, intergovernmental politics, legislative behavior, public policy, health policy, policy diffusion

**T.J. McCarthy**

Associate Professor (Teaching); Field Committee Coordinator, Public Policy — Labor economics, health economics, economics of education, public economics, program evaluation

**Daniel L. McFadden**

Nobel Laureate and USC Presidential Professor of Health Economics — Econometrics, economic theory and mathematical economics, health economics, economic growth and development

**Glenn Melnick**

Professor; Blue Cross of California Chair in Health Care Finance — Health economics and finance, health care systems, managed care

**Jennifer Miller**

Assistant Professor (Teaching) — Science and technology policy, workforce policy, economic development

**Leonard Mitchell**

Professor of the Practice of Economic Development; Executive Director, Center for Economic Development — Real estate development finance and law, regional and local economic development, economic development finance and law, international trade finance and law

**James E. Moore, II**

Professor — Economic impact analysis, engineering economics, transportation engineering, urban transportation, infrastructure

**Karen Mulligan**

Research Assistant Professor of Health Policy and Management — Health economics, applied microeconometrics, labor economics

**Juliet Ann Musso**

Associate Professor; Vice Chair of the Department of Governance, Management and the Policy Process; Field Committee Coordinator, Master of Public Administration — Federalism, urban political economy, fiscal policy, community governance, neighborhood organizations

**Dowell Myers**

Professor; Director, Population Dynamics Research Group — Demographic change, future of California, housing needs, immigration and assimilation, communication for consensus about change

**Deborah J. Natoli**

Associate Professor (Teaching); Director, Professional Doctorate Program — Adult development and learning, leadership, human behavior and organizations

**Michael B. Nichol**

Professor; Vice Dean for Faculty Affairs — Health policy, health care costs and resource utilization, health state preference assessment, cost effectiveness

**Lisa Ozaeta**

Assistant Professor (Teaching) — Health policy, strategy, law and innovation

**Gary Dean Painter**

Professor; Director, USC Sol Price Center for Social Innovation; Director, Homelessness Policy Research Institute — Social innovation, housing economics, urban economics, education policy, program evaluation

**David Petraeus**

Judge Widney Professor — International security, U.S. foreign policy, global and North American economics, counter-terrorism, the Middle East, energy revolution, advanced manufacturing

**Mark Phillips**

Associate Professor (Teaching) — Public finance, tax compliance, policy salience, applied microeconomics

**Jane Pisano**

Professor — International relations, public administration, civic engagement

**Mark Pisano**

Professor of the Practice of Public Administration — Urban planning, regional planning, transportation, housing, development, environmental policy, enterprise financing, institutional design

**Kelly Rawlings**

Associate Professor (Teaching) — Civic engagement and public participation, organizational behavior, nonprofit leadership and management, transformational leadership and change

**Christian L. Redfearn**

Associate Professor; Borstein Family Endowed Professor of Real Estate — Public policy, urban economics, housing markets, real estate finance

**William G. Resh**

Associate Professor — Public management, U.S. presidency and executive politics, policy implementation, organizational theory, personnel policy, organizational behavior

**Peter J. Robertson**

Associate Professor — Organizational change, organizational theory, ecological governance, collaborative organizing, interorganizational networks

**Mindy S. Romero**

Research Assistant Professor; Director, California Civic Engagement Project — Political sociology, voting rights and electoral participation, Latino political behavior, new technologies and civic engagement

**John A. Romley**

Associate Professor; Economist, USC Schaeffer Center — Hospital industry, health care productivity/efficiency, environmental health disparities

**Adam Rose**

Research Professor — Energy and environmental economics, public policy, natural hazards and terrorism, regional science, applied general equilibrium modeling

**Jovanna Rosen**

Research Assistant Professor — Community development, community investment, urban inequality

**Leonard D. Schaeffer**

Judge Robert Maclay Widney Chair — Interdisciplinary approaches to health care research and analysis to promote health and value in health care delivery, evidence-based health policy, public service

**Arnold Schwarzenegger**

Governor Downey Professor of State and Global Policy; Chairman, USC Schwarzenegger Institute for State and Global Policy — Post-partisan collaboration and sustainable policy implementation in education, energy and environment, fiscal and economic policy, health and human wellness, political reform

**Lisa Schweitzer**

Professor — Environmental justice, sustainable transportation, hazardous materials in urban environments, community environmental quality

**David C. Sloane**

Professor — Urban history, community health planning, health disparities, cultural landscapes

**Neeraj Sood**

Professor; Vice Dean for Research; Director of Research, USC Schaeffer Center — Health care costs, global health, health insurance markets and benefits design, medical innovation and regulatory policy, Medicare and aging

**Erroll G. Southers**

Professor of the Practice of Governance; Director, Safe Communities Institute; Director, Homegrown Violent Extremism Studies; Director of International Programs, USC Center for Risk and Economic Analysis of Terrorism Events (CREATE) — Counter-terrorism, homegrown violent extremism, school violence prevention

**Roberto Suro**

Professor; Director, Tomás Rivera Policy Institute — Immigration, Hispanic immigration, immigration policy

**Lois M. Takahashi**

Visiting Professor; Director, USC Price School in Sacramento — Public and social service delivery to vulnerable populations in the U.S. and in Southeast/SouthAsian cities

**Jeffrey W. Talley**

Professor of the Practice of Public Policy and Engineering — Intersection of engineering, business and public policy, including public-private partnerships, and technology's impact on society, business, and government

**Shui Yan Tang**

Frances R. and John J. Duggan Professor in Public Administration; Chair, Department of Governance, Management and the Policy Process — Environmental policy, organizational commitment, institutional analysis, microcredit, common-pool resources

**Michael Thom**

Associate Professor (Teaching) — Taxation, public finance, regulatory policy, public policy analysis, political philosophy

**Erin Trish**

Research Assistant Professor — Health care markets, health policy, health economics, health care reform

**Karen Van Nuys**

Research Assistant Professor — Value of life sciences innovation, health policy, pharmaceutical pricing and distribution, organizational economics

**Dora Kingsley Vertenten**

Professor (Teaching) — Public policy, intergovernmental management, nonprofit management, strategic planning, social media and information technologies in collaborative and participatory democracy

**Detlof von Winterfeldt**

Professor; Director, USC Center for Risk and Economic Analysis of Terrorism Events (CREATE) — Decision analysis, risk analysis, environmental policy, behavioral decision research, homeland security

**Dan Wei**

Research Associate Professor — Energy and climate policy, energy and environmental economics, economics of natural and man-made disasters

**Frank V. Zerunyan**

Professor of the Practice of Governance; Director, Executive Education — Local governments, administrative law, public-private partnerships, leadership, negotiation and executive education

**Julie M. Zissimopoulos**

Associate Professor; Vice Dean for Academic Affairs; Associate Director, USC Schaeffer Center — Economics of aging, economics of the family, labor economics, health economics



# Research Centers and Groups





# Online Learning: Online Degrees and Certificates

## Expanding our reach

The Price School offers two graduate degree programs, two graduate certificate programs, and select courses annually in an online learning format. Online education students retain a strong sense of community, a hallmark of all Price programs. The online programs include live video conferencing, on-demand video presentations, social networking, and asynchronous communications with professors, student teams, and alumni.

### ONLINE MASTER OF PUBLIC ADMINISTRATION PROGRAM

The online degree program was designed and developed with the working professional in mind — combining the world-class faculty instruction and comprehensive focus of the Price School’s traditional MPA with the convenience and portability of online learning.

Thanks to the Price School’s online learning technologies, students can enjoy real-time collaboration that is as familiar and valued as in its traditional MPA program. The online MPA offers students the opportunity to post questions and observations any time of day.

For more information, please visit [publicadmin.usc.edu](http://publicadmin.usc.edu).

### EXECUTIVE MASTER OF HEALTH ADMINISTRATION

Developed for both mid-career clinical and management professionals, the Executive Master of Health Administration program from the USC Price School delivers a transformative graduate-level educational experience designed to prepare the nation’s leading health care executives. Coursework is delivered primarily online, supplemented with two five-day in-residence sessions held at the USC University Park Campus, with a curriculum geared for the active working professional. See page 35 for more information.

### EXECUTIVE MASTER OF URBAN PLANNING

This new degree program trains leaders to understand

both the public and private sector and bridges the gap between urban planning goals and the objectives and constraints of effective real estate development while giving students the flexible schedule of an online program. The program can be completed in 16 months while working full time.

For more information: [priceschool.usc.edu/programs/masters/executive-mup](http://priceschool.usc.edu/programs/masters/executive-mup)

### ONLINE CERTIFICATE IN HOMELAND SECURITY AND PUBLIC POLICY

This graduate certificate develops and refines risk analysis skills and provides students with the knowledge needed to understand the increasingly important issues of homeland security and public policy.

For more information, please visit [priceschool.usc.edu/certificate/homeland-security](http://priceschool.usc.edu/certificate/homeland-security).

### ONLINE CERTIFICATE IN ADMINISTRATION OF LONG-TERM CARE PROGRAMS

Through this certificate program, students gain an overview of the problems and issues in the health field, an understanding and appreciation of the nuances of managing facilities for older adults, and management skills.

For more information, please visit [priceschool.usc.edu/certificate/longterm-care](http://priceschool.usc.edu/certificate/longterm-care) and [priceschool.usc.edu/gainful-employment-disclosure](http://priceschool.usc.edu/gainful-employment-disclosure).

# Price School in Sacramento

## Studying in Sacramento

USC has been educating leaders in Sacramento for more than 45 years. Located a few blocks from the California State Capitol, the Price School in Sacramento has exceptional academic, executive education, and policy outreach opportunities. Students choose the Sacramento-based Master of Public Administration (MPA) program for its focus on state policy and network of public service professionals. The Sacramento MPA offers coursework in an intensive format that makes it convenient for students to work full time while going to school. Students enjoy the benefits of an education at a major research university and the intimacy of a strong learning community.

### FACULTY

At the Price School in Sacramento, courses are taught by distinguished full-time and expert adjunct faculty. The MPA program in Sacramento balances the perspectives of theoretical researchers and practitioners who have many years of public administration experience.

Full-time, adjunct, and affiliated faculty include: Lois Takahashi, PhD, Houston I. Flournoy Professor of State Government and Director, USC Price School in Sacramento; Janet Denhardt, DPA, Chester A. Newland Professor of Public Administration; Juliet Musso, PhD, Associate Professor and Vice Chair, Department of Governance, Management and the Policy Process; Mindy Romero, PhD, Research Assistant Professor and Director, California Civic Engagement Project; Paul Danczyk, PhD, Director of Executive Education in Sacramento; Robert Ingenito, MS (Economics), Principal Consultant, CA Senate Committee on Appropriations; Matthew Wheeler, DPPD, Founder and Chief Executive Officer, Wheeler Company; William Barcellona, MHA, Senior Vice President for Government Affairs, CAPG and Steve Shea, MPP, Government Finance Consultant, California State Senate.

For more information, please visit [priceschool.usc.edu/sacramento](http://priceschool.usc.edu/sacramento).



Professor Janet Denhardt provided testimony at the California State Legislature Joint Committee on Rules Subcommittee on Sexual Harassment Prevention and Response’s informational hearing in Sacramento.



# USC Price Office of Career Services

## *Connected for a lifetime*

A distinguishing attribute of the USC Sol Price School of Public Policy is its Career Services Office, which is available to Price graduate and undergraduate students as well as alumni. The Career Services Office maintains strong connections to the community of practice — affording students and alumni unique opportunities to interact with and learn from professional and community leaders representing a wide variety of fields.

The Price School Career Services Office offers a number of professional development programs, career workshops, and events. Some of the programs and services offered include:

- Career advisement
- Career workshops
- Career fair/networking nights
- Professional mentoring program
- Externship program
- Internship/residency programs
- Jobs, internships and fellowship databases
- Information sessions/on-campus interviews

The Career Services Office makes it easy for students to network with professionals in their fields as well as attend strategic career workshops and networking nights to learn about different careers. The Professional

Mentoring and Externship programs assist students in defining and testing their career aspirations.

### **THE TROJAN FAMILY**

The Price School Career Services Office works closely with Price School alumni throughout the world — an unparalleled global network known as the USC “Trojan Family.” Each year, our graduates become part of a thriving community of more than 20,000 Price School alumni in all 50 states and the District of Columbia within the United States, and in 52 countries around the world.

Price School graduates make a vital difference in the world, and the Career Services Office is committed to helping students and alumni achieve their goals.

For more information, please visit [priceschool.usc.edu/careers](https://priceschool.usc.edu/careers).



*“The Price School Career Services Office is top notch. It’s thoroughness and attentiveness is second to none. The programs and services it provides are the building blocks toward success.”*

— **Coron Brinson, MPA ’14**  
*Behavior Interventionist,  
FOCUS Psychological-  
Educational Services*





# USC Price Students and Student Associations



*“I served as president of Sol Global, where we started building a student networking list that should benefit domestic and international students interested in international policy and planning. Through the organization, I collaborated with many faculty members and students not only at Price but throughout USC.”*

## Jongwon Lee, MPL '14

Researcher, Korea Institute of Energy Technology Evaluation and Planning

### USC PRICE STUDENTS

There are approximately 2,028 students enrolled at the Price School. At present, 42 states, the District of Columbia and 40 countries are represented in the Price School’s student body.

- 43% are from underrepresented groups
- 44% are from outside the Southern California region
- 15% are from foreign countries
- 52% are female

Most graduate students enter the Price School with two-to-five years of work experience in their respective fields. Those entering the executive programs typically have 10-20 years of experience.

Price students possess backgrounds as legislative staff members, city council members, real estate developers, health care professionals, architects, foreign government officials, Peace Corps volunteers, physicians, teachers, foundation staff members, engineers, researchers, and professionals from community-based organizations, among others.

### USC PRICE STUDENT ASSOCIATIONS

The Price School has 20 active student associations that are an integral part of the cultural and intellectual fabric of the school. Student organizations range from field-specific organizations to cross-cultural organizations, and provide unique opportunities for students to expand academic, professional, and social networks.

The 2018-19 Price School student associations are:

#### Asian Pacific Islander Caucus (APIC)

Constituents: Price School students interested in Asian and Pacific Islander issues

#### Associated Students of Planning and Development (ASPD)

Constituents: Graduate and undergraduate students in planning

#### Graduate Policy and Administration Community (GPAC)

Constituents: Master of Public Administration (MPA), Master of Public Policy (MPP), and Master of Nonprofit Leadership and Management (MNLN) students

#### Graduate Real Estate Association (GREA)

Constituents: Graduate students in real estate development in the Price School and the Marshall School of Business

#### International City/County Management Association (ICMA@USC)

Constituents: Students interested in international city and county management

#### IPPAM Graduate Student Association

Constituents: Students in the Master of International Public Policy and Management program

#### Partnership for an Equitable Los Angeles (PELA)

Constituents: Price School students interested in policy and planning research and advocacy

#### Pi Alpha Alpha

Constituents: Undergraduate or graduate students in or committed to public affairs or public administration or who have demonstrated outstanding public service, and who meet this honor society’s requirements

#### Price Latino Student Association (PLSA)

Constituents: Price School students interested in Latino issues

#### Price PhD Student Association

Constituents: Doctoral students

#### Price Social Innovation

Constituents: Price students interested in social innovation/enterprise

#### Price Society of Black Students

Constituents: Price students interested in African American and Black issues

#### Price Women and Allies

Constituents: Price students interested in strengthening and developing women as leaders in policy, planning and development

#### Queer Policy Caucus

Constituents: QPC provides a space for lesbian, gay, bisexual, transgender, queer, intersex, and ally (LGBTQIA) Price students to connect, network, and engage key policy issues directly affecting LGBTQ individuals and communities

#### Southern California Policy Review

Description: Student peer-reviewed policy journal

#### Student Health Council (SHC)

Constituents: Master of Health Administration (MHA) students, and undergraduate and doctoral students emphasizing health administration

#### Trojan Real Estate Association (TREA)

Constituents: Undergraduate students in real estate development in the Price School and the Marshall School of Business

#### Upsilon Phi Delta

Constituents: Health administration students who meet this honor society’s requirements

#### USC Homeland Security Student Association

Constituents: Any students interested in the fields of homeland security and emergency management

#### Veterans at Price (Vets@Price)

Constituents: Any undergraduate, graduate, faculty, alumni, and staff who support the student-veterans at the USC Price School







*“I often find myself reflecting on the enormous courage, dedication, and resolve of all Price School students, alumni, and faculty to tackle the multifaceted and often intractable problems that we currently face in the world.”*

**Jack H. Knott**

Dean, USC Sol Price School of Public Policy



# USC Price

Sol Price School of Public Policy

## Improving the quality of life for people and their communities worldwide

For more information, please contact:

USC Price School of Public Policy

University of Southern California

Los Angeles, CA 90089-0626

[priceschool.usc.edu](http://priceschool.usc.edu)

Follow us:

